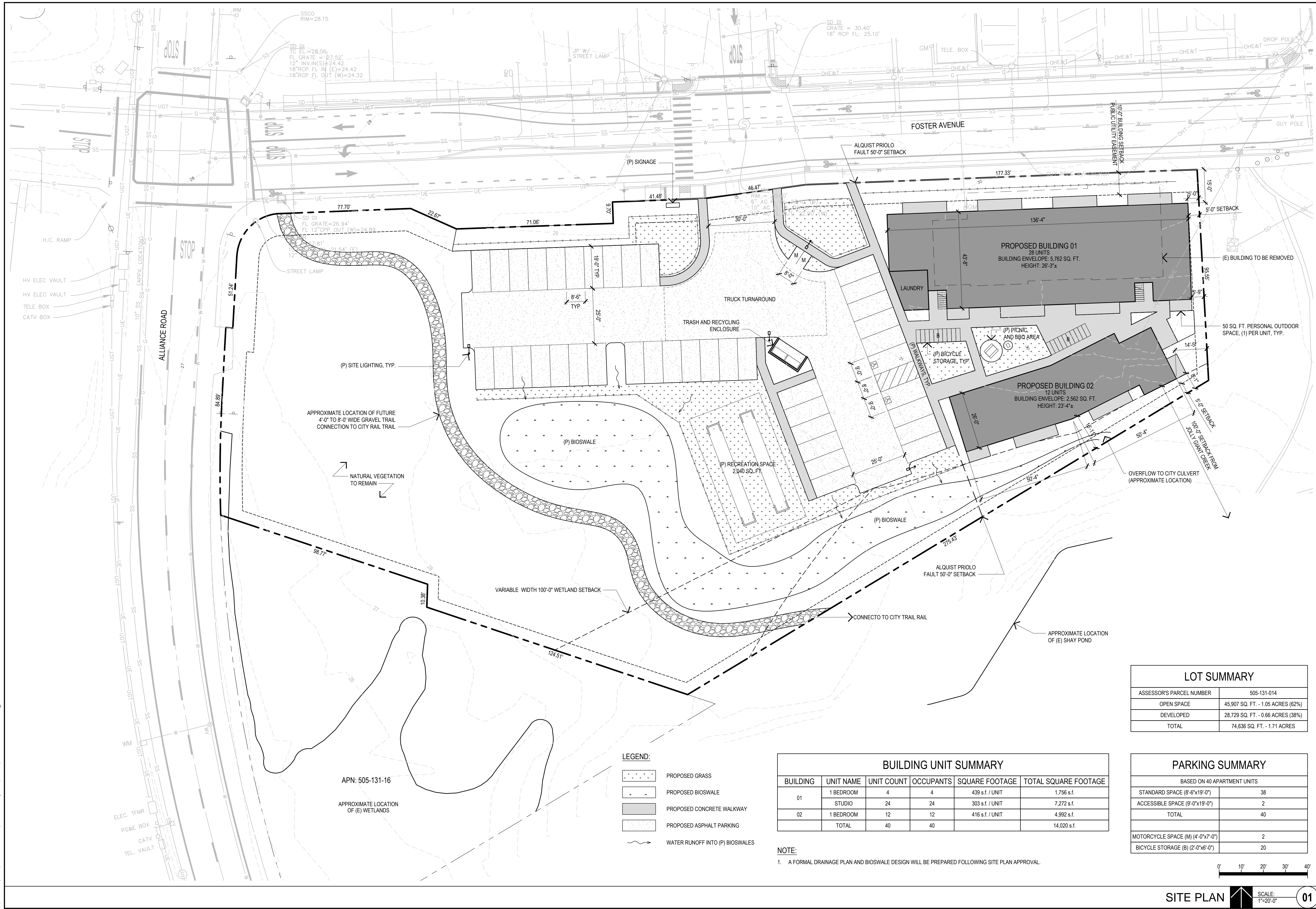


Jul 21 2015 11:07am  
 T:\Cadfiles\2007\010\strombeck\7010\07\Twin Parks\DWG\A.1.1-7010 Site Plan.dwg



APN: 505-131-16

APPROXIMATE LOCATION OF (E) WETLANDS

**LEGEND:**

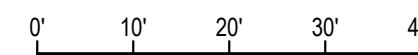
- PROPOSED GRASS
- PROPOSED BIOSWALE
- PROPOSED CONCRETE WALKWAY
- PROPOSED ASPHALT PARKING
- WATER RUNOFF INTO (P) BIOSWALES

BUILDING UNIT SUMMARY					
BUILDING	UNIT NAME	UNIT COUNT	OCCUPANTS	SQUARE FOOTAGE	TOTAL SQUARE FOOTAGE
01	1 BEDROOM	4	4	439 s.f. / UNIT	1,756 s.f.
	STUDIO	24	24	303 s.f. / UNIT	7,272 s.f.
02	1 BEDROOM	12	12	416 s.f. / UNIT	4,992 s.f.
TOTAL		40	40		14,020 s.f.

**NOTE:**  
 1. A FORMAL DRAINAGE PLAN AND BIOSWALE DESIGN WILL BE PREPARED FOLLOWING SITE PLAN APPROVAL.

LOT SUMMARY	
ASSESSOR'S PARCEL NUMBER	505-131-014
OPEN SPACE	45,907 SQ. FT. - 1.05 ACRES (62%)
DEVELOPED	28,729 SQ. FT. - 0.66 ACRES (38%)
TOTAL	74,636 SQ. FT. - 1.71 ACRES

PARKING SUMMARY	
BASED ON 40 APARTMENT UNITS	
STANDARD SPACE (8'-6"x19'-0")	38
ACCESSIBLE SPACE (9'-0"x19'-0")	2
TOTAL	40
MOTORCYCLE SPACE (M) (4'-0"x7'-0")	2
BICYCLE STORAGE (B) (2'-0"x6'-0")	20



**SITE PLAN** SCALE: 1"=20'-0" **01**

**LACO**  
 EUREKA • UKIAH • SANTA ROSA  
 1-800-515-5054 www.lacoassociates.com

NO.	HISTORY / REVISION	BY	CHK.	DATE
	SUBMITTAL TO DESIGN REVIEW	SMS	MDN	06-11-15
	CITY TRAIL TRAIL ADDITION	SMS	MDN	06-22-15
	BUILDING 01 DESIGN CHANGE	SMS	MDN	07-21-15

**STROMBECK PROPERTIES - TWIN PARKS APARTMENTS**  
 APN: 505-131-014  
 SITE PLAN

**STEVEN STROMBECK**  
 P.O. BOX 37, EUREKA, CA 95502

DRAWN	SMS
CHECK	KDB / DNC
APPROVED	MDN
DATE	07-21-15
JOB NUMBER	7010.07
SHEET	A1.1