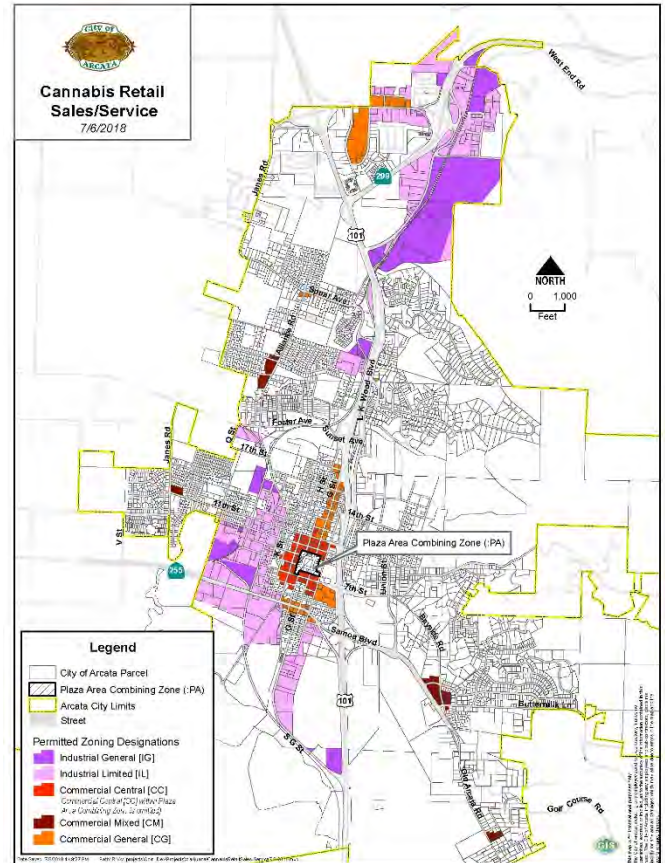
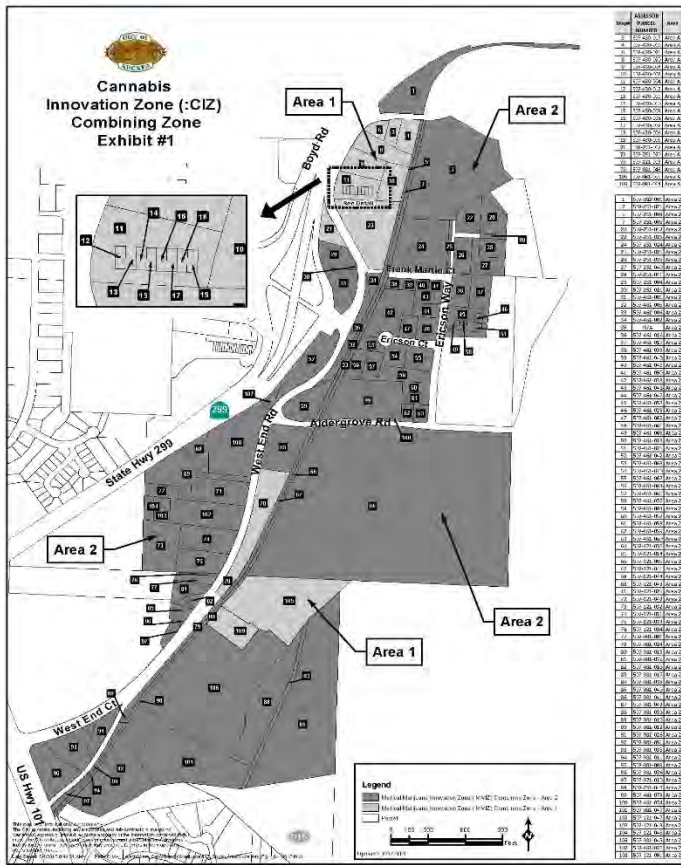


# COMMERCIAL CANNABIS ACTIVITY PERMIT (CCAP) INFORMATION

Cannabis activities are allowed in the City's Cannabis Activity Zone (CIZ). Retail Cannabis activity is allowed in specific areas of the City. You can find small maps of the CIZ and allowed retail areas below. For larger maps, please go to [www.cityofarcata.org/691/Commercial-Cannabis-Activity-Permit](http://www.cityofarcata.org/691/Commercial-Cannabis-Activity-Permit).



## APPLICATION NOTES:

- Submit a complete application. Provide a hard copy with wet signatures of all business owners, and property owner.
 

**PLEASE NOTE:**

  - Live Scans.** The application requires evidence of Live Scans for all owners, managers, key employees, and inventory managers. Print legibly and note the name of the CCAP business on the Live Scan request to avoid delays in processing with the FBI and DOJ. Live Scans may be performed at any authorized facility, but copies of must be provided with the application. We strongly recommend performing scans with the Arcata Police Department. We have no way of determining whether scans performed elsewhere are in process.
  - Construction.** If construction (new building or tenant improvements) is necessary before your business opens, please submit copies of the building permit application with your CCAP application. If plans are not yet complete, please give us an estimate as to when you will request a building permit.
  - Equipment.** Provide a comprehensive list of all equipment to be installed. For any equipment that is not UL listed, and creates heat or builds pressure, please provide an independent review by a qualified engineer.
  - Zoning.** All CCAPs require a Use Permit or a Zoning Clearance. Operations located in Area 1 of the CIZ require only a Zoning Clearance. All other operations require a Use Permit. A Zoning Clearance application is included with this package, along with a link / web address for the Use Permit application.
  - Phasing.** If your business plan calls for phasing in stages of your operation, please call to discuss implementation.
- Various components of an application are routed through six different City departments for compliance review. When all compliance requirements are met, the permit can be issued. A non-operating Provisional Use permit may also be issued at your request.

## Types of Commercial Cannabis Activity Permits Allowed:

CITY PERMIT NAME	ACTIVITY	STATE TYPE
<b>Manufacturer 1</b>	Non-Volatile Solvent Manufacturing <ul style="list-style-type: none"> <li>• May also conduct Infusion (Type N) and Packaging or Labeling (Type P) Activities</li> <li>• Facilities may register with the City and State as a Shared-Use Facility (Type S) for tenants</li> </ul>	6
<b>Manufacturer 2</b>	Volatile Solvent Manufacturing <ul style="list-style-type: none"> <li>• May also conduct Manufacturer 1, Infusion (Type N), and Packaging or Labeling (Type P) Activities</li> <li>• Facilities may register with the City and State as a Shared-Use Facility (Type S) for tenants</li> </ul>	7
<b>Testing Laboratory</b>	Performs tests of cannabis goods	8
<b>Retailer – Storefront</b>	Retail sales with open to the public	10
<b>Retailer – Non-Storefront</b>	Retail sales at cannabis events – no physical location open to public	9
<b>Distributor</b>	Transports cannabis goods, arranges for testing, conducts quality assurance for packaging and labeling compliance	11
<b>Distributor – Transport Only</b>	Transports cannabis goods between licensed cultivators, manufacturers, and distributors	13
<b>Microbusiness</b>	Operates at least 3 of the following activities: Cultivation, Manufacturer 1, Retailer, Distributor	12
<b>Cultivation – Processor</b>	Conducts trimming, drying, curing, grading, packaging for manufactured and non-manufactured products.	Processor
<b>Cultivation Type 1</b>	Specialty Outdoor, up to 5,000 SF or 50 mature plants on non-contiguous plots	Specialty Outdoor
<b>Cultivation Type 1A</b>	Specialty Indoor, up to 5,000 SF	Specialty Indoor
<b>Cultivation Type 1B</b>	Specialty Mixed-Light, up to 2,500 SF	Specialty Mixed-Light
<b>Cultivation Type 1C</b>	Specialty Indoor Cottage Small, up to 500 SF	Specialty Cottage
<b>Cultivation Type 2</b>	Small Outdoor, 5,001 to 10,000 SF	Small Outdoor
<b>Cultivation Type 2A</b>	Small Indoor, 5,001 to 10,000 SF	Small Indoor
<b>Cultivation Type 2B</b>	Small Mixed Light, 5,001 to 10,000 SF	Small Mixed-Light
<b>Cultivation Type 3</b>	Medium Outdoor, 10,001 SF to one acre	Medium Outdoor
<b>Cultivation Type 3A</b>	Medium Indoor, 10,001 SF to 22,000 SF	Medium Indoor
<b>Cultivation Type 3B</b>	Medium Mixed-Light, 10,001 to 22,000 SF	Medium Mixed-Light
<b>Cultivation Type 4</b>	Nursery	Nursery

Many questions can be answered on our City website. Go to [www.cityofarcata.org](http://www.cityofarcata.org), and choose Commercial Cannabis in the Departments menu.

**Submit Your Application To:** Susan Diehl McCarthy, Community Development Specialist  
 City of Arcata  
 736 F Street, Arcata CA 95521  
 707-825-2168  
[sdiehlmccarthy@cityofarcata.org](mailto:sdiehlmccarthy@cityofarcata.org)