



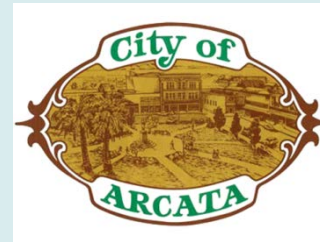
**Arcata Annie & Mary Trail**

# **Community Workshop**

**April 23, 2019**

## Project Partners

- City of Arcata
- Consultant Team
  - Trail People
  - SHN
  - RCAA
- Caltrans
- Project Task Force
- Community members!



# Tonight's Agenda

- Workshop Welcome – 5:30
- Overview Presentation – 5:45
- Open House – 6:25
- Next Steps & Closing – 7:25
- Adjourn – 7:30



# Conversation Guidelines

- Be respectful
- Speak one at a time
- Share air time
- All ideas and points of view have value
- Stay on the agenda
- Cell phones off or on vibrate



- Completion of an Arcata Annie & Mary Trail Connectivity Plan to identify options for enhanced safety and connectivity for walking and biking between Valley West, HSU, downtown Arcata, and to the future Annie & Mary Trail



# Why Are We Here?

- To understand the goals of the Arcata Annie & Mary Trail Connectivity Project
- To improve safety and connections for walking & biking through north Arcata and in Valley West
- To review and provide input on preliminary trail alternatives
- To understand the next steps and input opportunities for this project



# Project Schedule



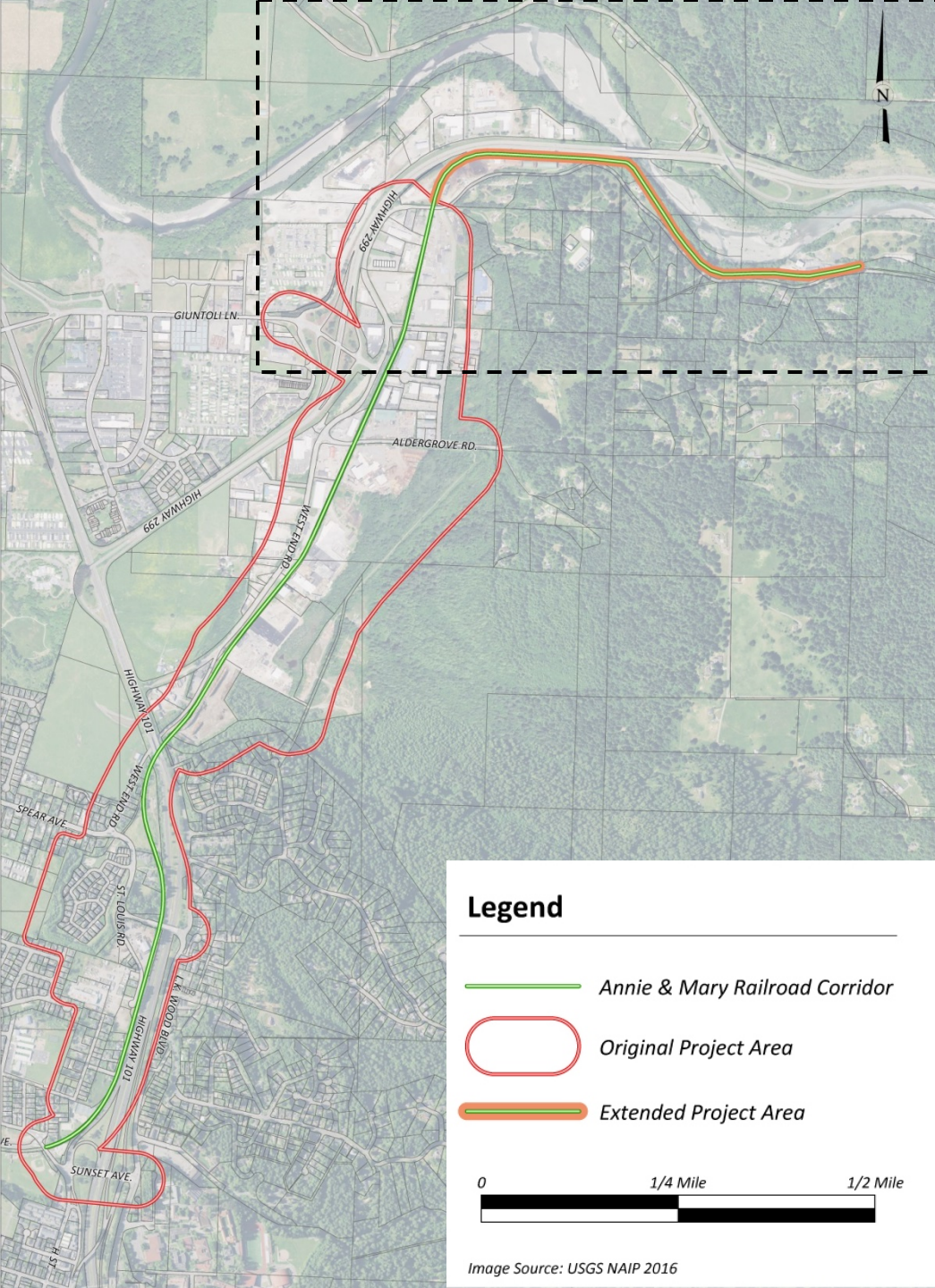
We are here!

# Project Area

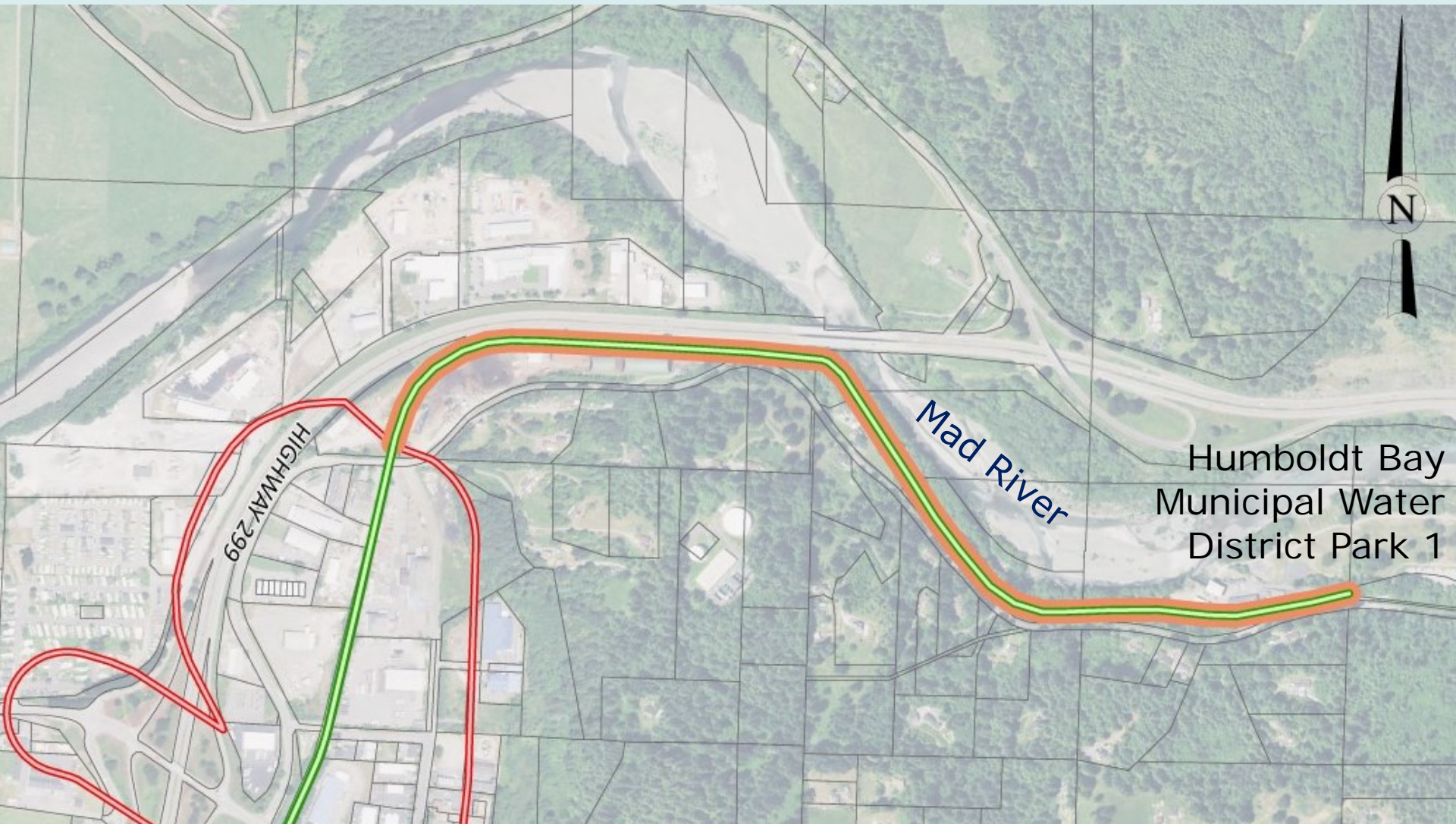


# Project Area

Northern Project  
Extension



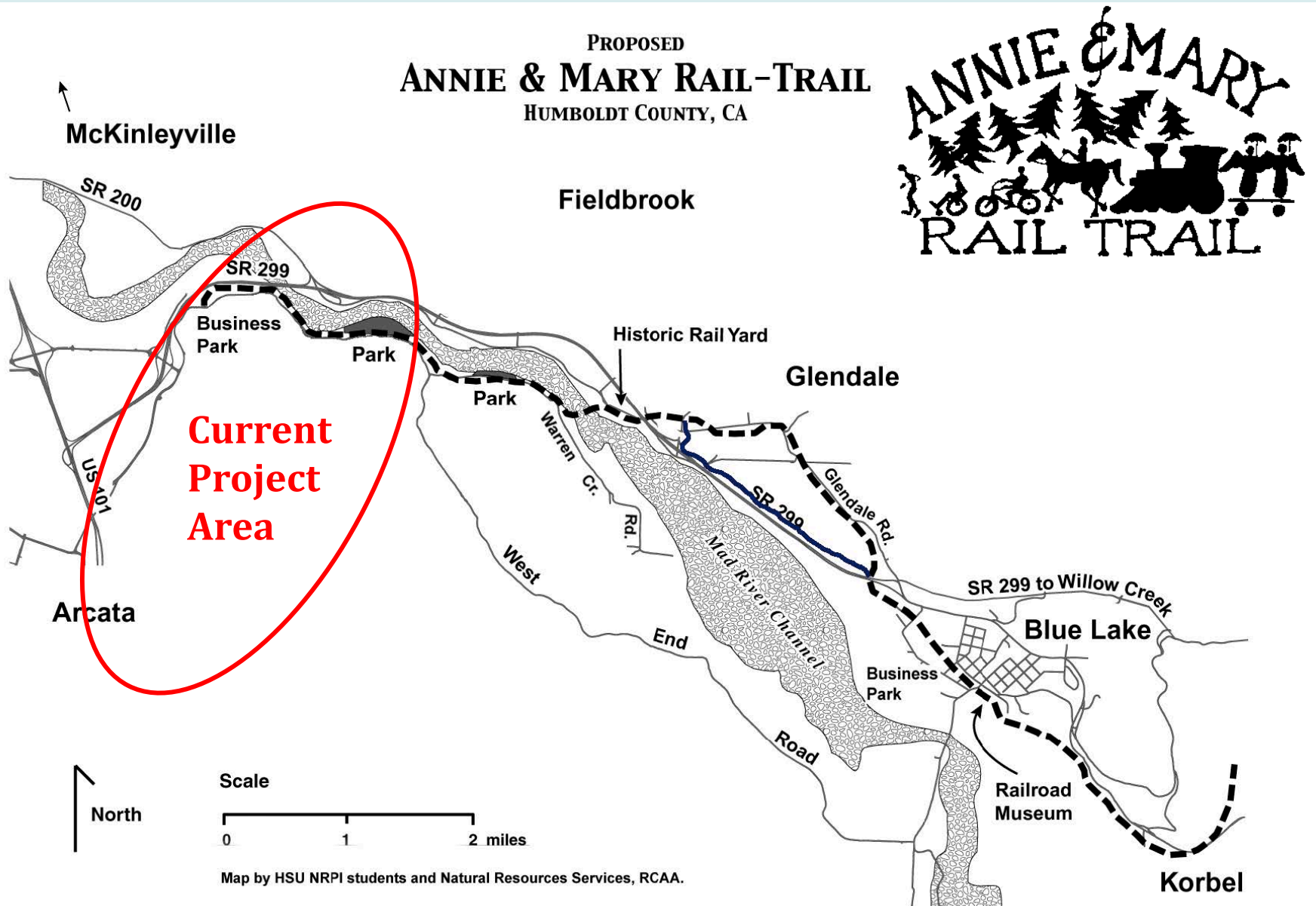
# Northern Project Extension



# Northern Project Extension



# Annie & Mary Trail Vision



# Trail Corridor Opportunities

**Along rail corridor**



**Along public road  
right-of-way**

# Rich Rail History – Opportunity for Interpretation



Courtesy Humboldt County Historical Society

## Of Railyards and Marshlands

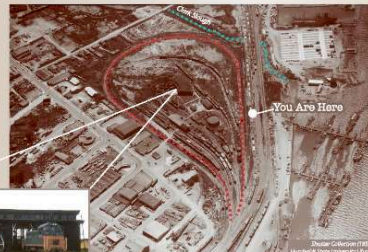
### Tracing the Tracks of the Past



**This vacant lot, once part of Humboldt Bay's salt marsh system, was filled for railroad and industrial use. Can you find traces of the past?**

This grassy area stretching out before you is all that remains of the vast Northwestern Pacific Railroad yard. Known as the *Balloon Tract*, it was named for the tear-shaped track used to turn trains around to head back to the Bay Area. It was the largest yard north of Sacramento and San Francisco.

Built in the 1920s, it included six *rip tracks* (used for sorting rail cars), a car repair shed with blacksmith and carpenter shop, and an eight stall roundhouse with turntable. Yard use declined and all operations ceased by December 1998.



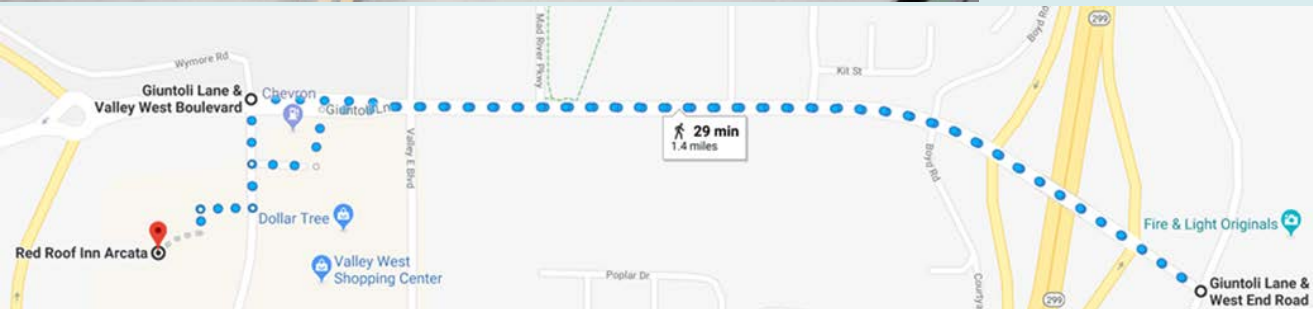
Above: Visible is the encircling balloon track (red), roundhouse, rail line, Clark Slough (blue) and early docks of the Wharfinger Marina. Left: Diesel locomotives at the roundhouse.

As seen on this 1902 map (left), you would be surrounded by salt marsh at this location. Clark Slough was once part of a continuous marsh system ringing the bay. By the 1920s, this area was filled in with sand, silt and gravel and diked off from tidal cycles. Both the railroad yard of yesterday, and today's waterfront trail, sit atop this fill.

Clark Slough's waters now enter the bay through a culvert pipe. The last of its small exposed waterways still attract egrets, herons, kingfishers, opossums, the occasional otter and passersby like you.



# Prior Community Input Events



**Valley West  
walkability  
assessment  
August 2018**

# Prior Community Input Events



**Kick-off community workshop  
February 4, 2019**

**Arcata Annie and Mary Connectivity Project - Give your input!**

**What specific part of the project area is a  
challenge or concern for travel safety?**



# Community Outreach Results

- 370 responses to community survey (online and in person) January-February
- Adjacent landowner input through conversations and questionnaire
- Bilingual outreach with nearby schools

**Arcata Annie & Mary Trail Connectivity Project Community Survey**

Please help the City of Arcata plan the multistage Annie and Mary trail in Arcata. The trail will connect the Sunset Avenue/Larson Park area via the railroad corridor and West End Road to the Aldegrove Industrial Park/Valley West area and eventually Blue Lake. Your comments on this short survey will be used to guide the planning and design options for the project, which is funded by the Caltrans Sustainable Communities Program. A map of the project area is attached for you to review as you fill out the survey.

1) Why do you/your family travel along West End Road, over the Sunset Avenue or Giustoli overpasses, or to Valley West or the Aldegrove Industrial Park? Please check all that apply:

- ☐ I live in the area described.
- ☐ I attend/takes my K-12 grade child(ren) to school in the area described.
- ☐ I travel in the area to go to work.
- ☐ I travel in the area to go to school.
- ☐ I visit parks, trails and recreation facilities in the area.
- ☐ I travel in the area to do my shopping/visit stores.
- ☐ Other (work/recreation/etc) - Please specify: \_\_\_\_\_

2) How frequently do you walk (whether for commuting or recreation) or jog/run in the project area?

Daily \_\_\_\_\_ Couple of times a week \_\_\_\_\_ Couple of times a month \_\_\_\_\_ Rarely \_\_\_\_\_ Never \_\_\_\_\_

If so, to where? (optional) \_\_\_\_\_

3) How frequently do you hike, scooter, skate, or other non-motorized mode of transport (whether for commuting or recreation) in the project area?

Daily \_\_\_\_\_ Couple of times a week \_\_\_\_\_ Couple of times a month \_\_\_\_\_ Rarely \_\_\_\_\_ Never \_\_\_\_\_

If so, to where? (optional) \_\_\_\_\_

4) How frequently do you drive in the project area?

Daily \_\_\_\_\_ Couple of times a week \_\_\_\_\_ Couple of times a month \_\_\_\_\_ Rarely \_\_\_\_\_ Never \_\_\_\_\_

If so, to where? (optional) \_\_\_\_\_

5) If you do not regularly walk, bike or roll in the project area, why is that?

- ☐ I do not feel safe (list reason) \_\_\_\_\_
- ☐ Distance is too great/takes too long
- ☐ I have other family transportation needs
- ☐ Weather can be unpredictable
- ☐ I do not travel frequently to north Arcata

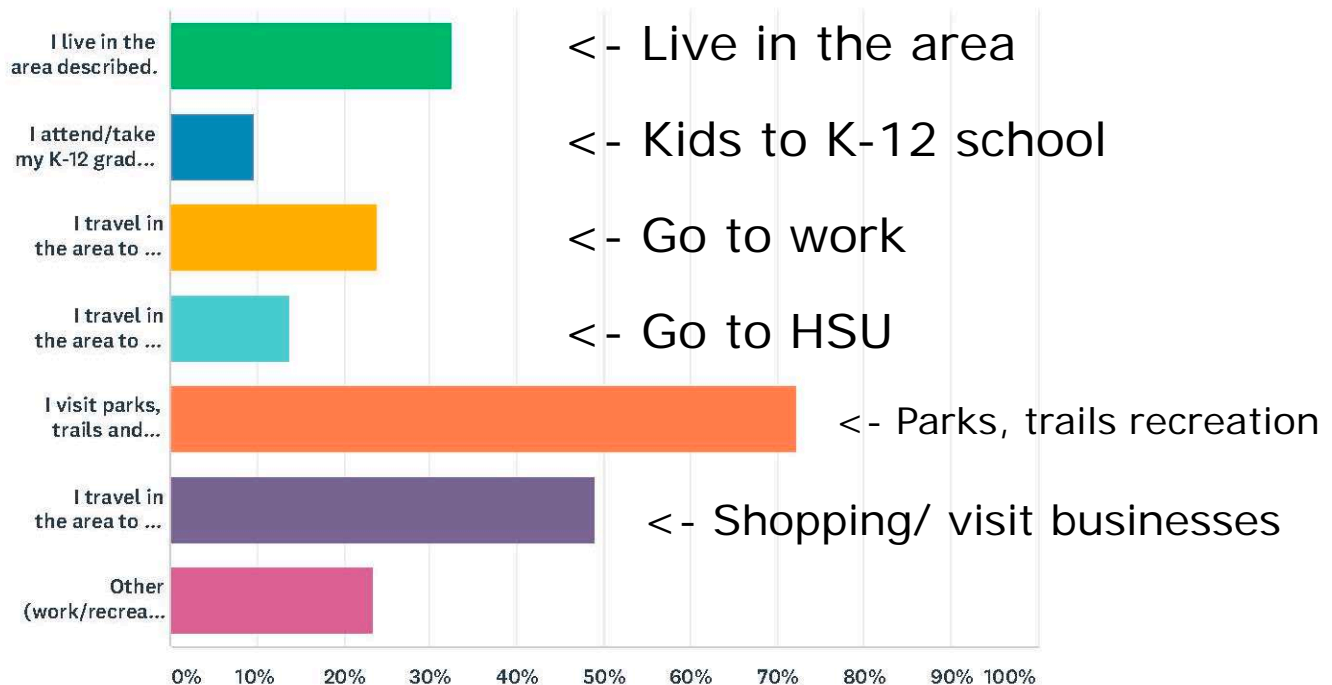
6) If Arcata's section of the Annie & Mary Trail were completed with links from the Sunset Avenue/Larson Park area to West End Road, Valley West and Aldegrove Industrial Park, in what ways do you estimate that you would use it?

- ☐ I would use the trail for neighborhood transportation in the vicinity of my home.
- ☐ I would bike, walk or roll on the trail for fun/exercise/recreation.

# Community Outreach Results

Q1 Why do you/ your family travel along West End Road, over the Sunset Avenue or Giuntoli overpasses, or to Valley West or the Aldergrove Industrial Park? Please select all that apply:

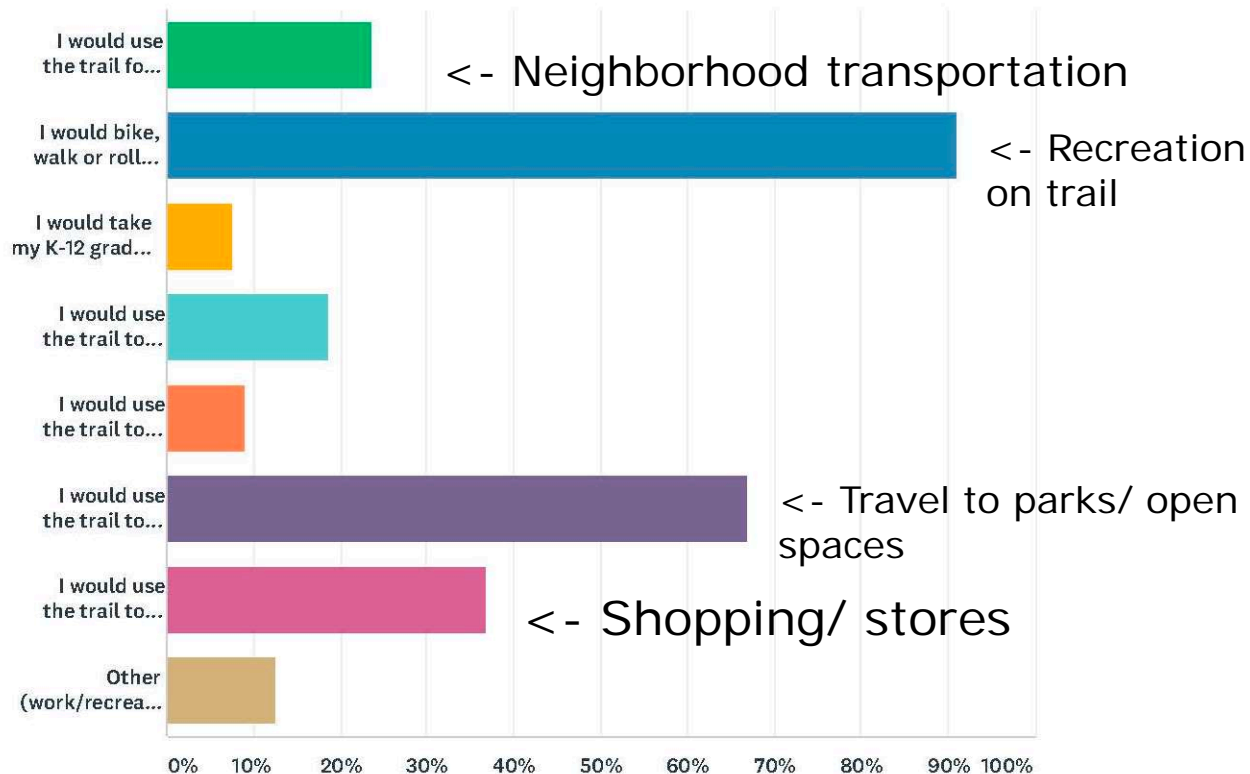
Answered: 364 Skipped: 6



# Community Outreach Results

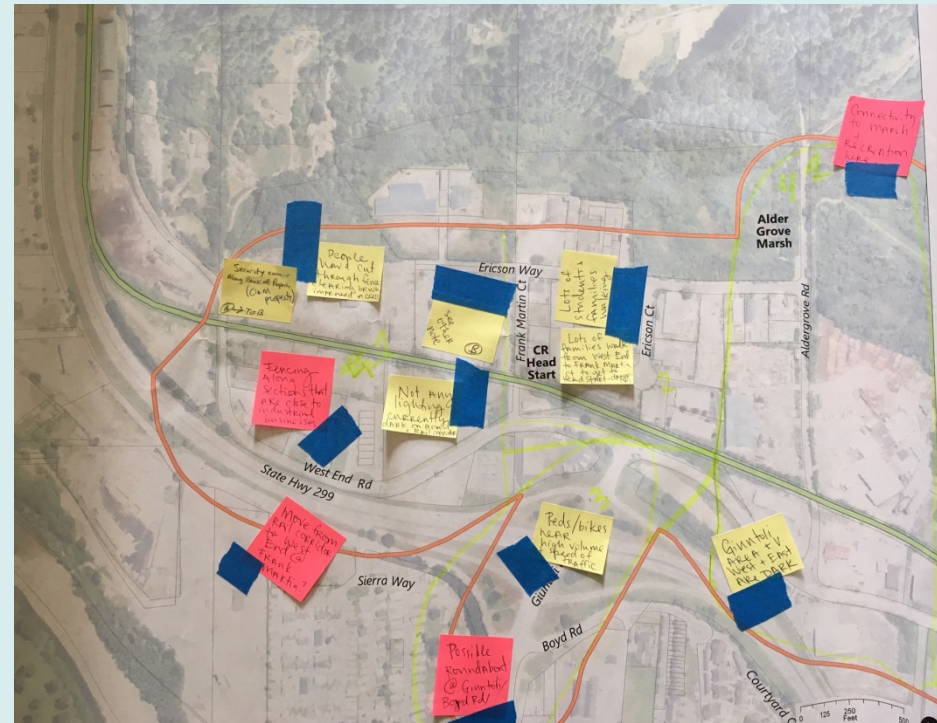
Q6 If Arcata's section of the Annie & Mary Trail were completed with links from the Sunset Avenue/ Larson Park area to, West End Road, Valley West and Aldergrove Industrial Park, in what ways do you estimate that you would use it? Please select all that apply.

Answered: 359 Skipped: 11



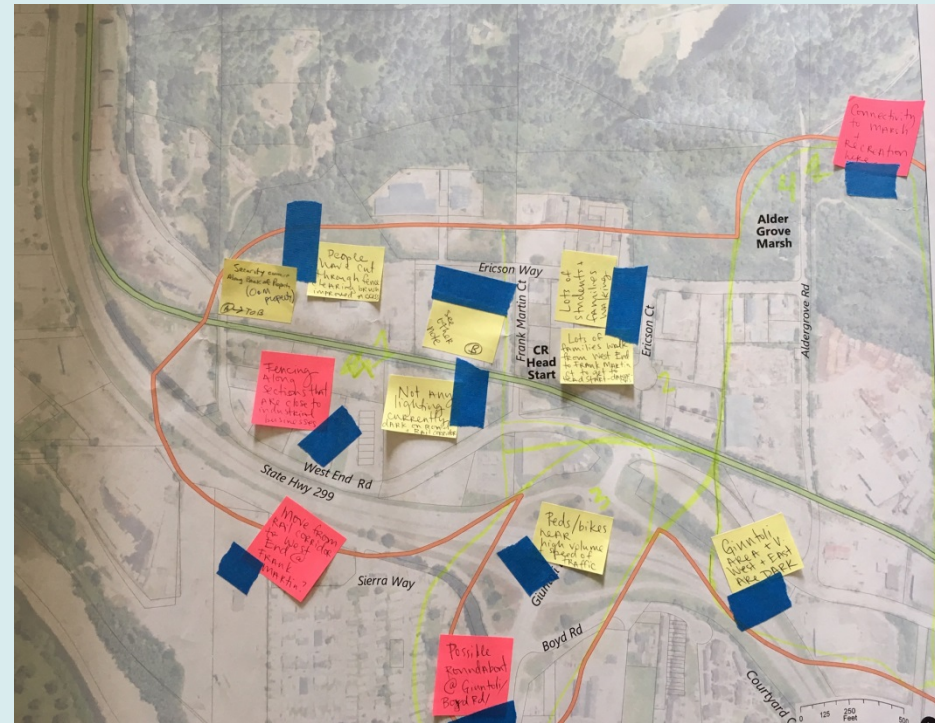
# Community Outreach Results

- Desire for trail facility separated from motor traffic
- Desire for connectivity for walking, biking and equestrian access to Arcata Ridge Trail and the Mad River
- Concerns about both transportation safety and personal safety traveling through the project area
- Sunset and Giuntoli overpasses safety concerns



# Community Outreach Results

- Ensure connections to neighborhoods and schools
- Ensure safe trail crossings of roadways
- Desire for pedestrian-scale lighting, good sight distance, trail maintenance for personal safety
- Desire for a mix of trail surface if feasible
- Many helpful comments at specific locations in project area



# Feedback from adjacent properties

- Ensure future trail does not impact important industrial and manufacturing hub on West End
- Interest in fencing or other interventions to ensure privacy
- Potential for walking and biking commutes to businesses





# Pop-Up Demonstration Yesterday



# Overview of Preliminary Trail Concepts

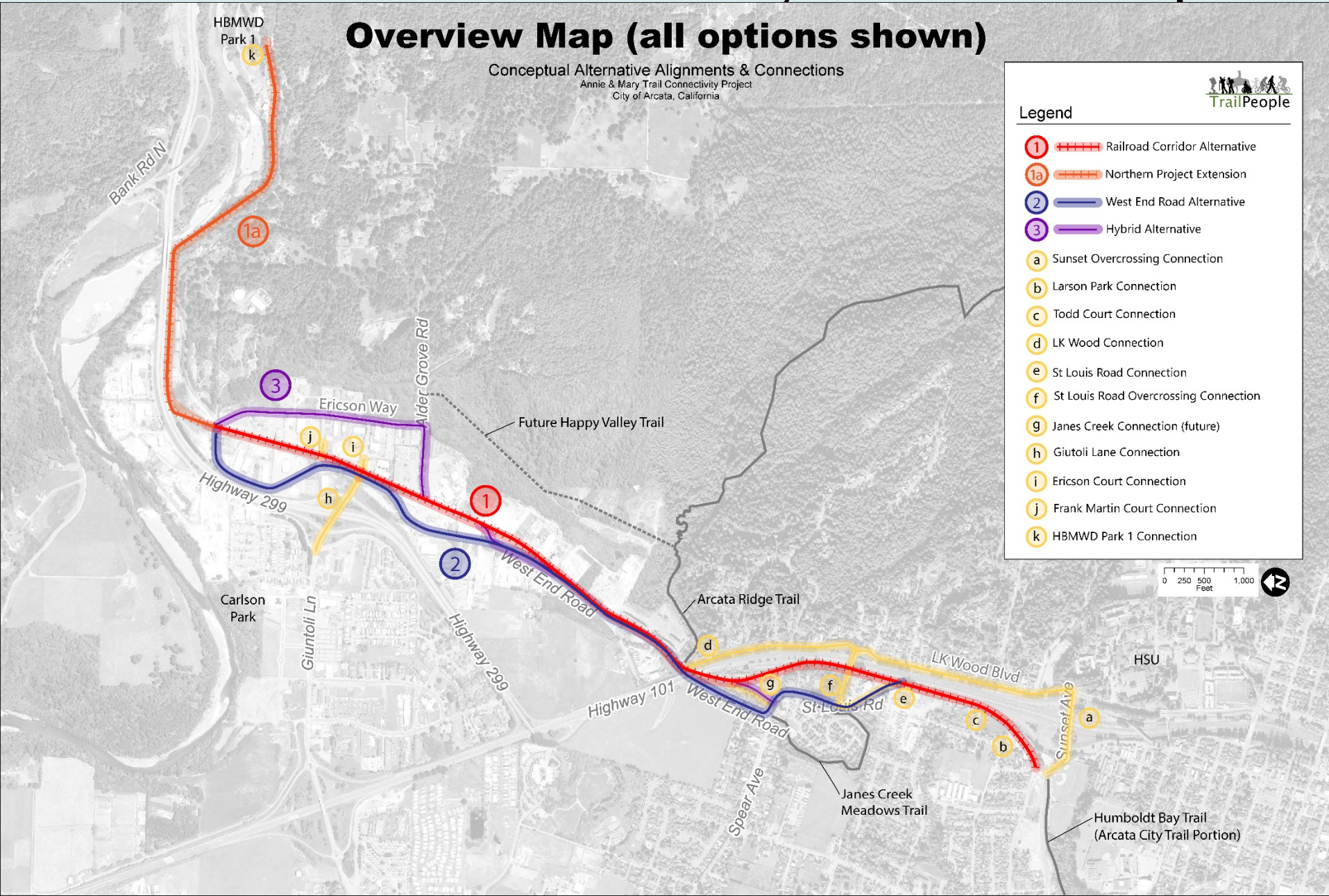
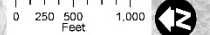
## Overview Map (all options shown)

Conceptual Alternative Alignments & Connections  
Annie & Mary Trail Connectivity Project  
City of Arcata, California



### Legend

- ① Railroad Corridor Alternative
- ①a Northern Project Extension
- ② West End Road Alternative
- ③ Hybrid Alternative
- a Sunset Overcrossing Connection
- b Larson Park Connection
- c Todd Court Connection
- d LK Wood Connection
- e St Louis Road Connection
- f St Louis Road Overcrossing Connection
- g Janes Creek Connection (future)
- h Giuntoli Lane Connection
- i Ericson Court Connection
- j Frank Martin Court Connection
- k HBMWD Park 1 Connection



# Overview of Preliminary Trail Concepts

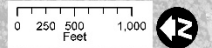
## 1 – Railroad Corridor Alternative

Conceptual Alternative Alignments & Connections  
Annie & Mary Trail Connectivity Project  
City of Arcata, California

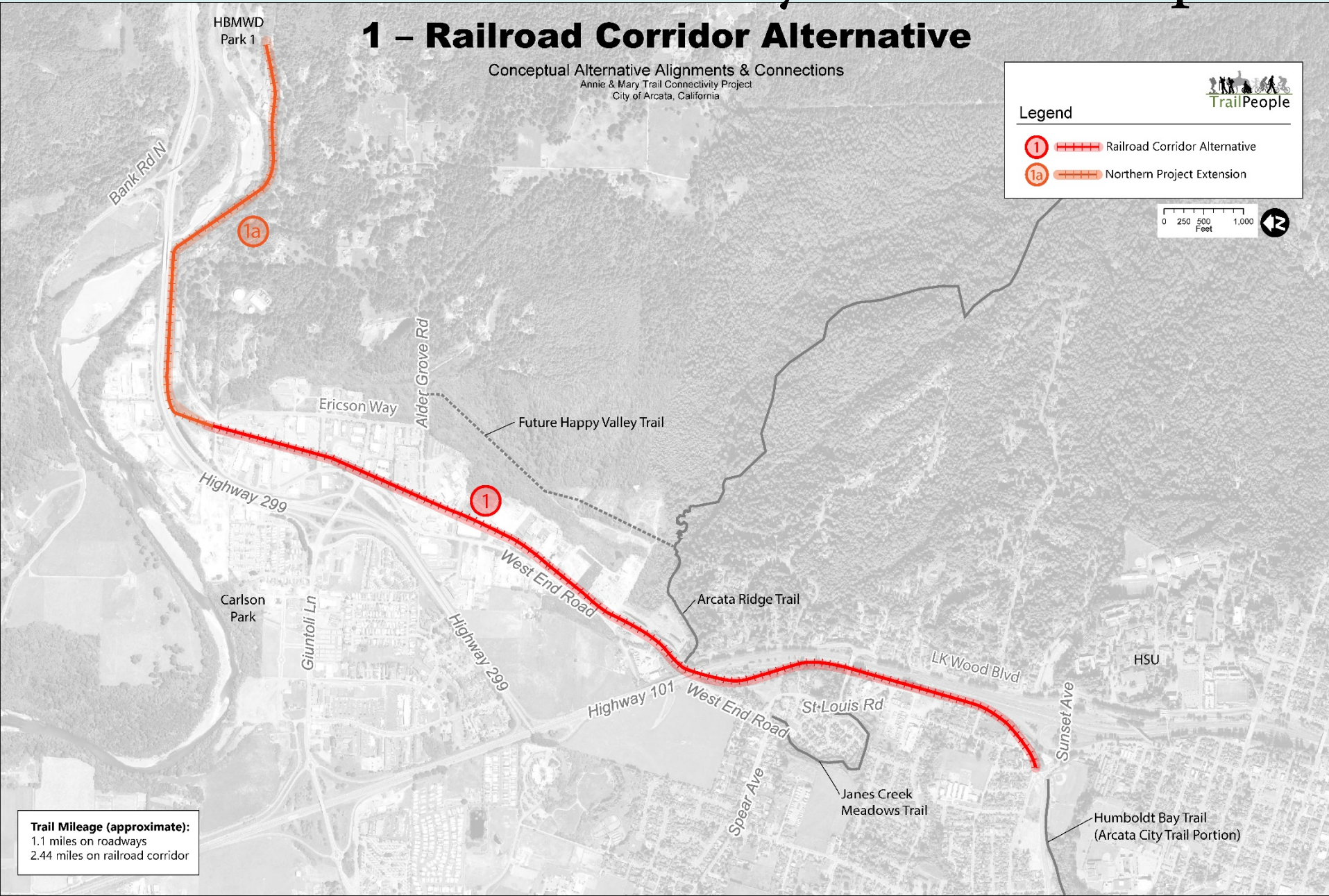


### Legend

- ① Railroad Corridor Alternative
- ①a Northern Project Extension



**Trail Mileage (approximate):**  
1.1 miles on roadways  
2.44 miles on railroad corridor



# Overview of Preliminary Trail Concepts

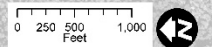
## 2 – West End Road Alternative

Conceptual Alternative Alignments & Connections  
Annie & Mary Trail Connectivity Project  
City of Arcata, California

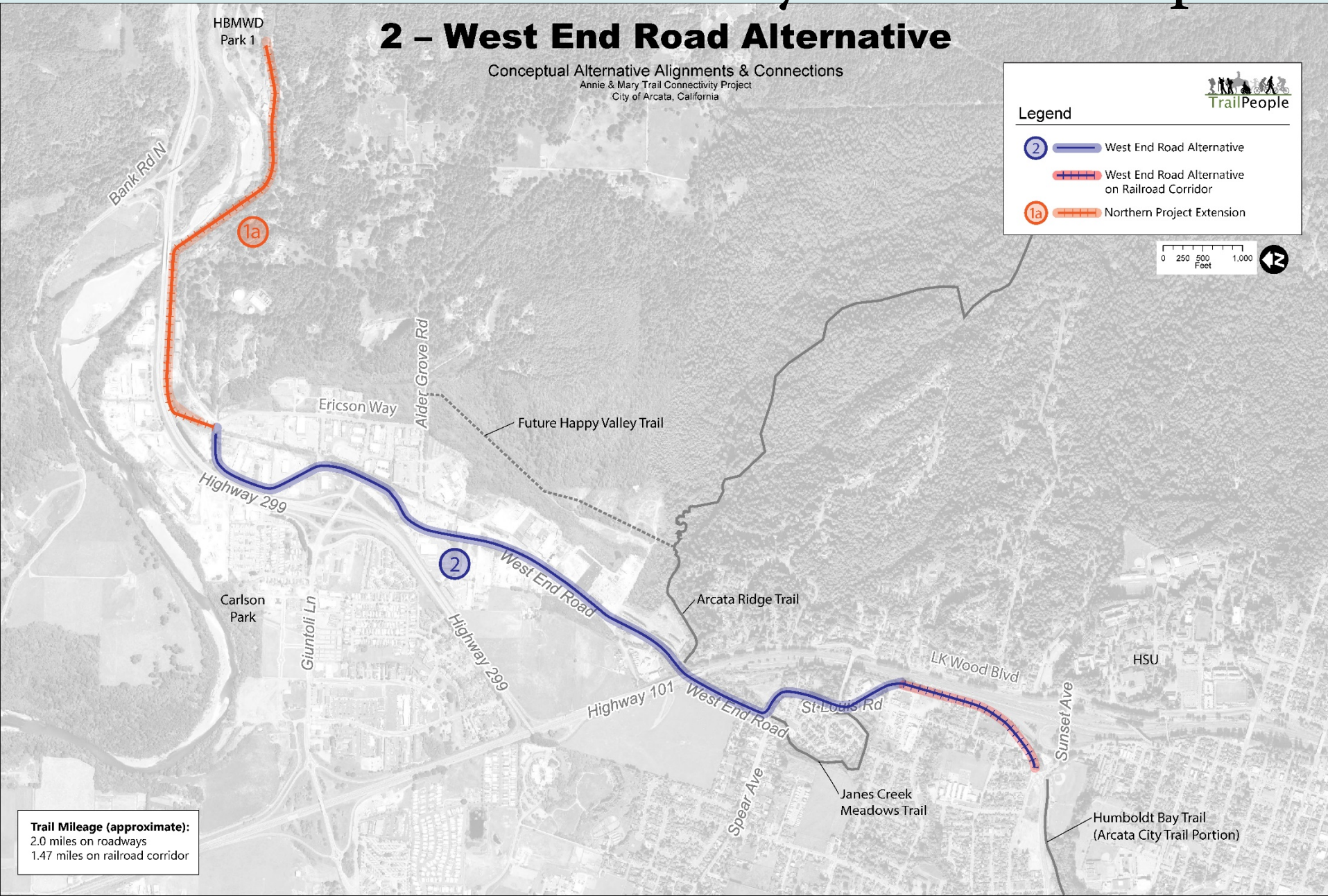


### Legend

- ② — West End Road Alternative
- West End Road Alternative on Railroad Corridor
- ①a — Northern Project Extension



**Trail Mileage (approximate):**  
2.0 miles on roadways  
1.47 miles on railroad corridor









# Overview of Preliminary Trail Concepts

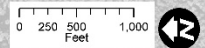
## 3 – Hybrid Alternative

Conceptual Alternative Alignments & Connections  
Annie & Mary Trail Connectivity Project  
City of Arcata, California

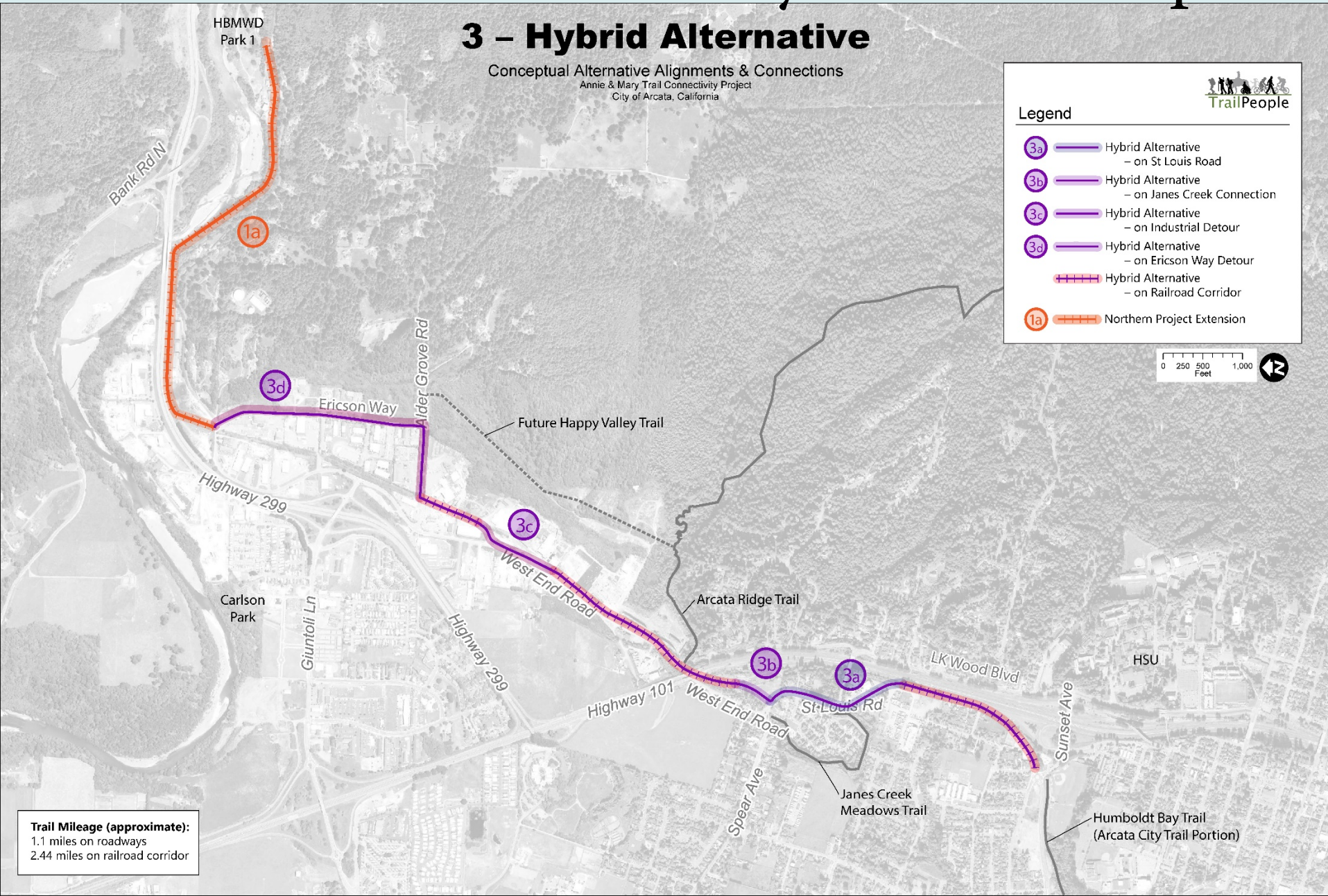


### Legend

-  Hybrid Alternative  
– on St Louis Road
-  Hybrid Alternative  
– on Janes Creek Connection
-  Hybrid Alternative  
– on Industrial Detour
-  Hybrid Alternative  
– on Ericson Way Detour
-  Hybrid Alternative  
– on Railroad Corridor
-  Northern Project Extension



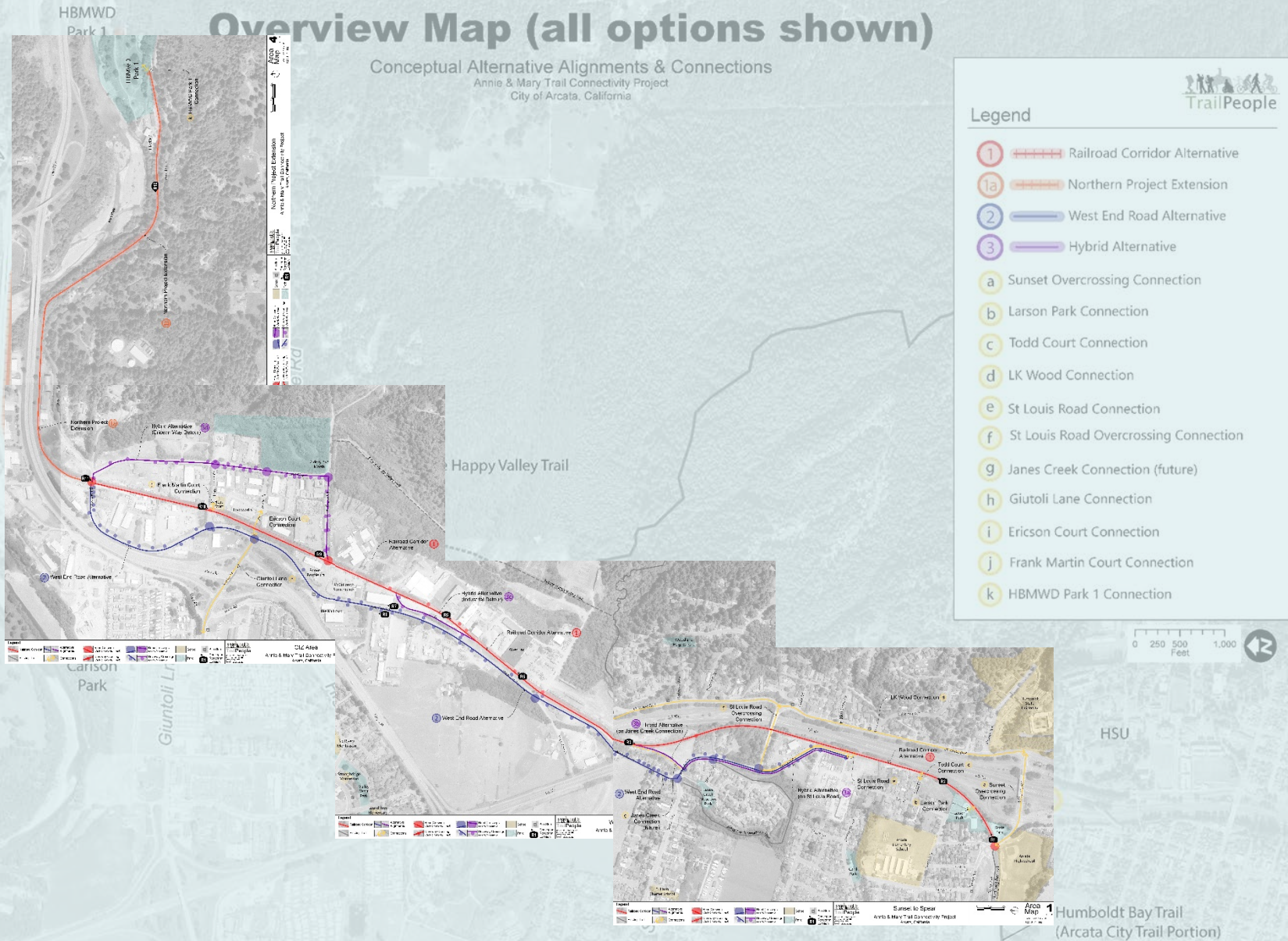
**Trail Mileage (approximate):**  
1.1 miles on roadways  
2.44 miles on railroad corridor



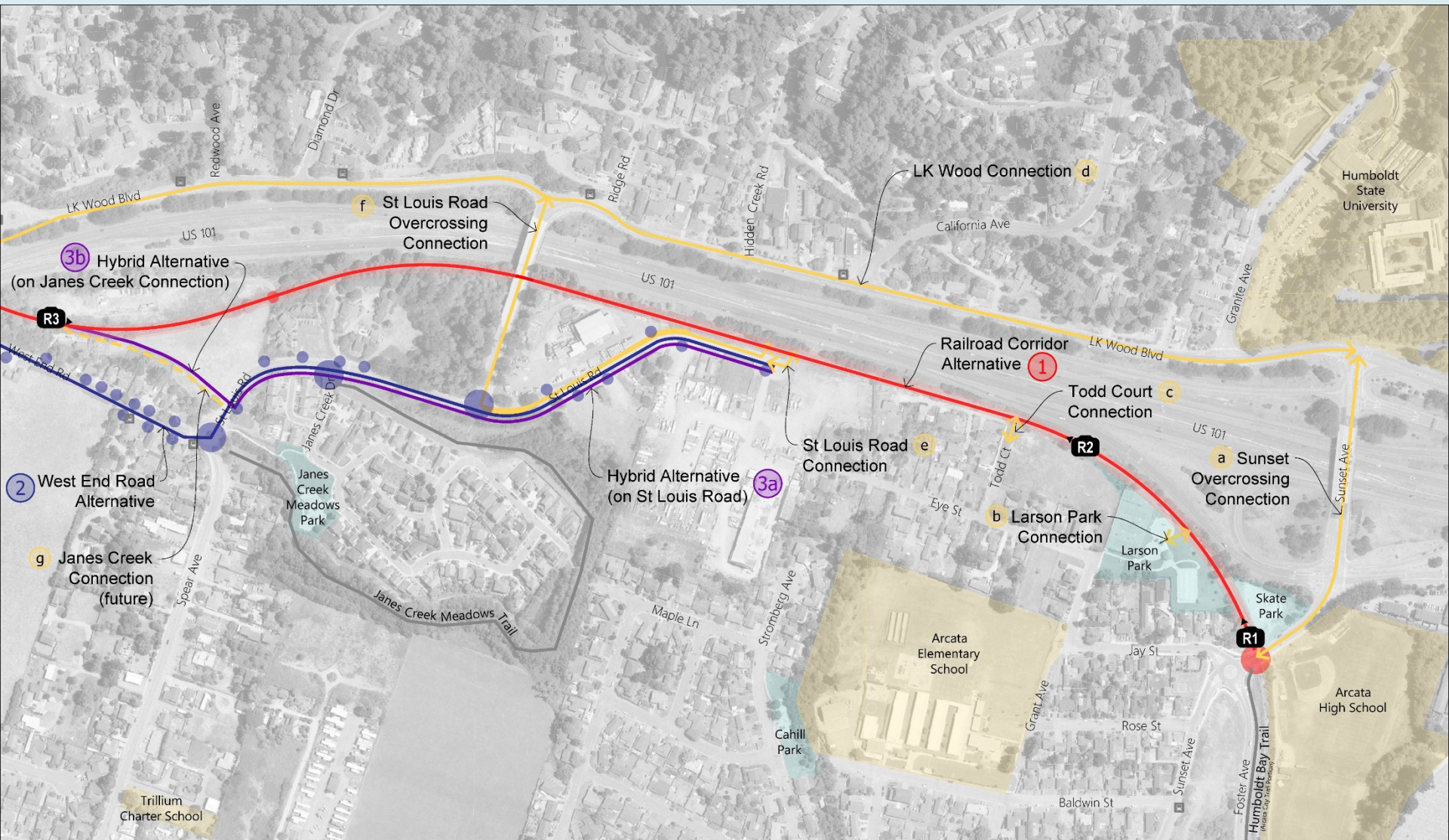
# Area Maps

## Overview Map (all options shown)

Conceptual Alternative Alignments & Connections  
Annie & Mary Trail Connectivity Project  
City of Arcata, California



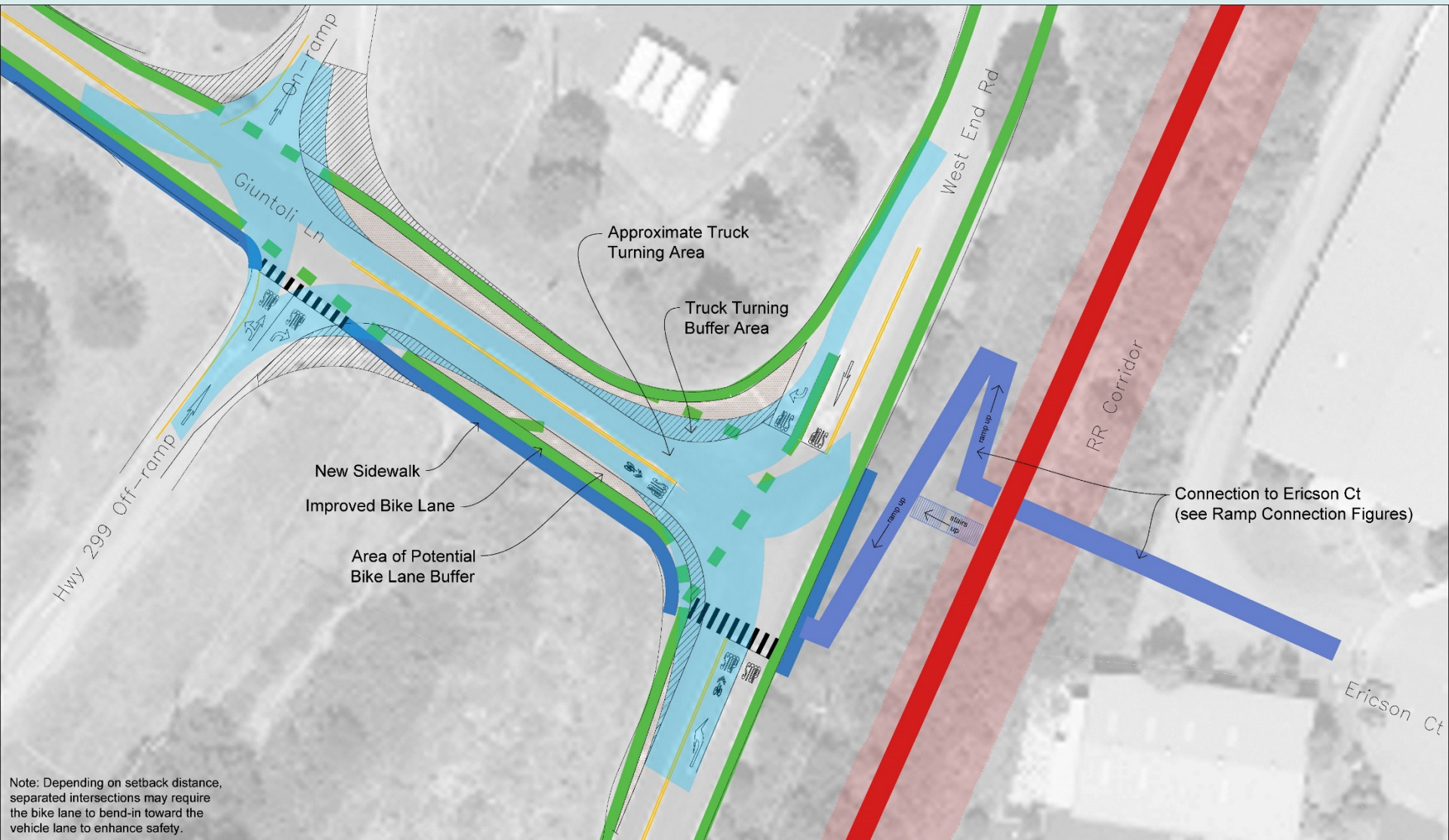
# Area Maps



**Sunset to Spear**  
Annie & Mary Trail Connectivity Project  
Arcata, California



# Connection Focus Maps – Giuntoli Lane

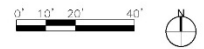


Note: Depending on setback distance, separated intersections may require the bike lane to bend-in toward the vehicle lane to enhance safety.

Legend			
Existing Sidewalk	New Sidewalk	Truck Turning Buffer Area	Potential Pathway or Ramp Connection
Existing Trail	Improved or New Bike Lane	Bike Lane Buffer Area	Potential Island

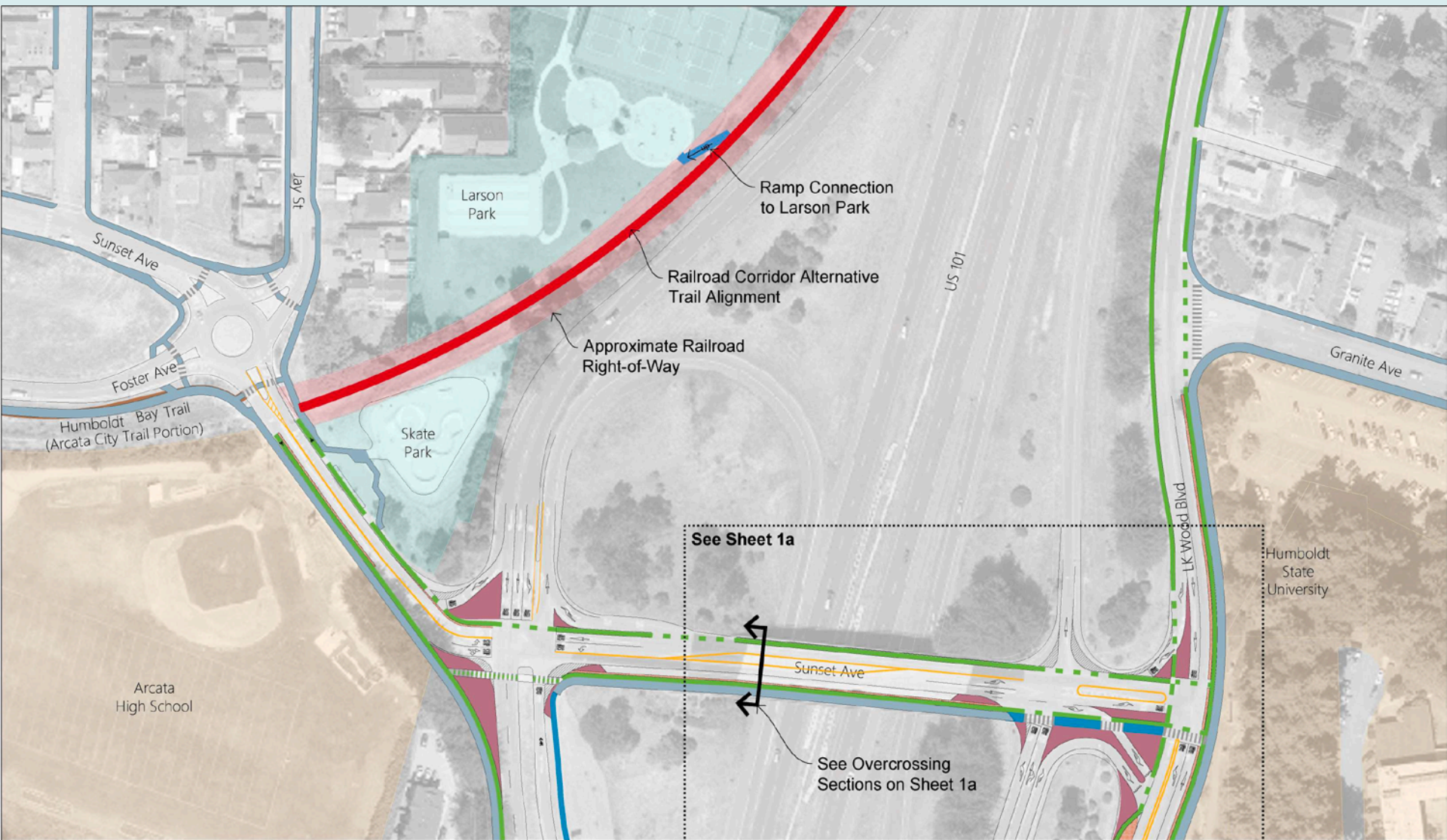


Focus Area Map Detail  
Giuntoli & West End Rd Intersection  
Annie & Mary Trail Connectivity Project  
Arcata, California



Focus Map **3a**  
DATE: April 19, 2019  
SCALE: 1" = 20'

# Connection Focus Maps – Sunset Avenue



See Sheet 1a

See Overcrossing Sections on Sheet 1a

**Legend**

Approximate Railroad ROW & Railroad Corridor Alternative Trail Alignment	School	Bus Stop	Existing Sidewalk	New Sidewalk	Truck Turning Buffer Area	Potential Pathway or Ramp Connection
Park	Existing Trail	Improved or New Bike Lane	Bike Lane Buffer Area	Potential Island		

**Trail People**  
919 First Street, Suite 1  
Eureka, CA 94501  
(707) 205-1310  
www.trailpeople.org

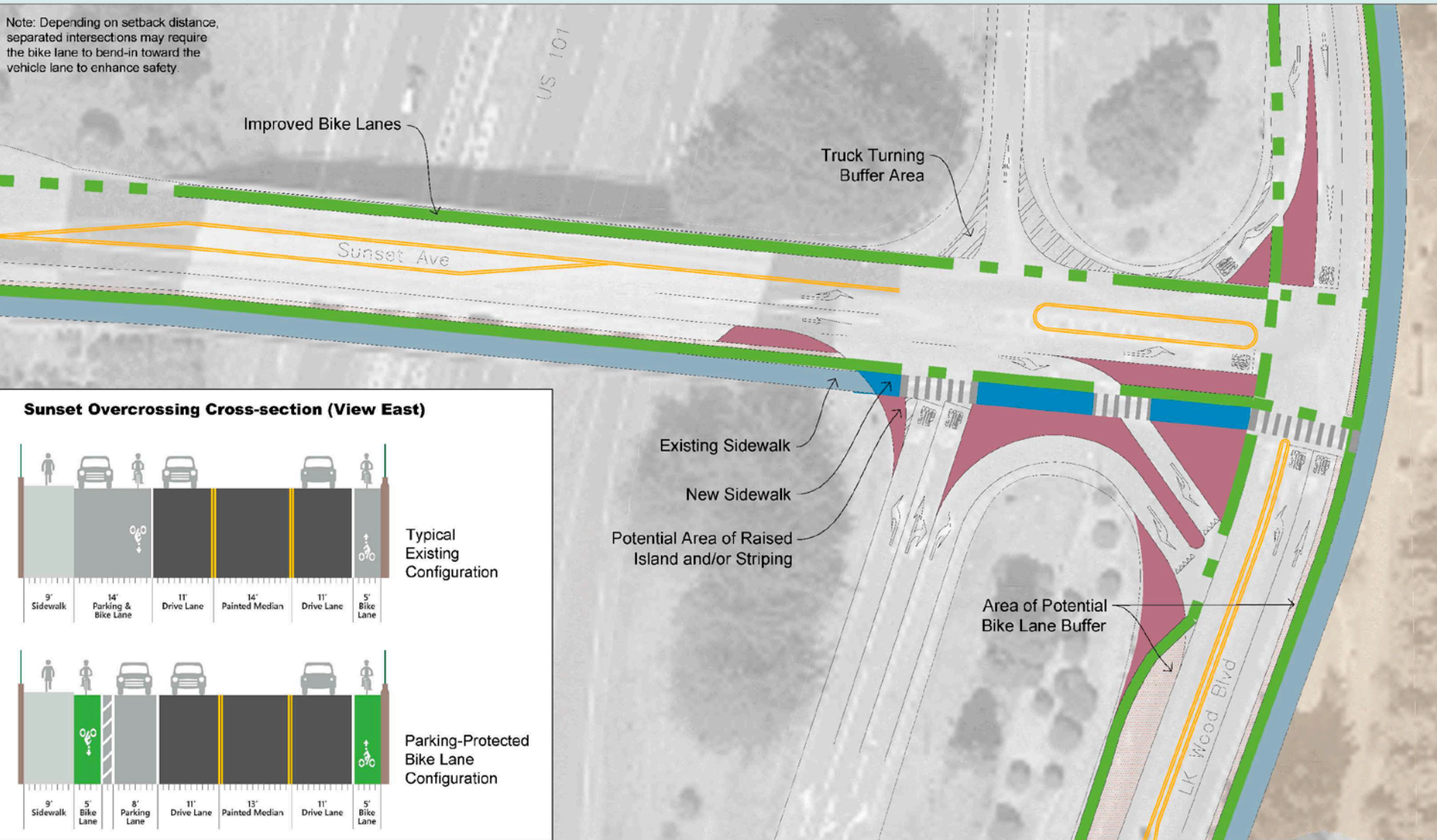
**Focus Area Map**  
**Sunset Ave & Larson Park Area**  
**Annie & Mary Trail Connectivity Project**  
Arcata, California

0' 25' 50' 100'  
N

**Focus Map 1**  
DATE: April 19, 2019  
SCALE: 1" = 50'

# Connection Focus Maps – Sunset Avenue

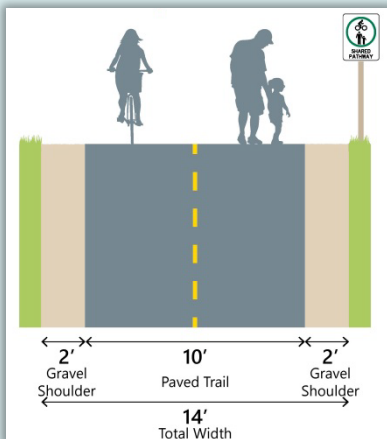
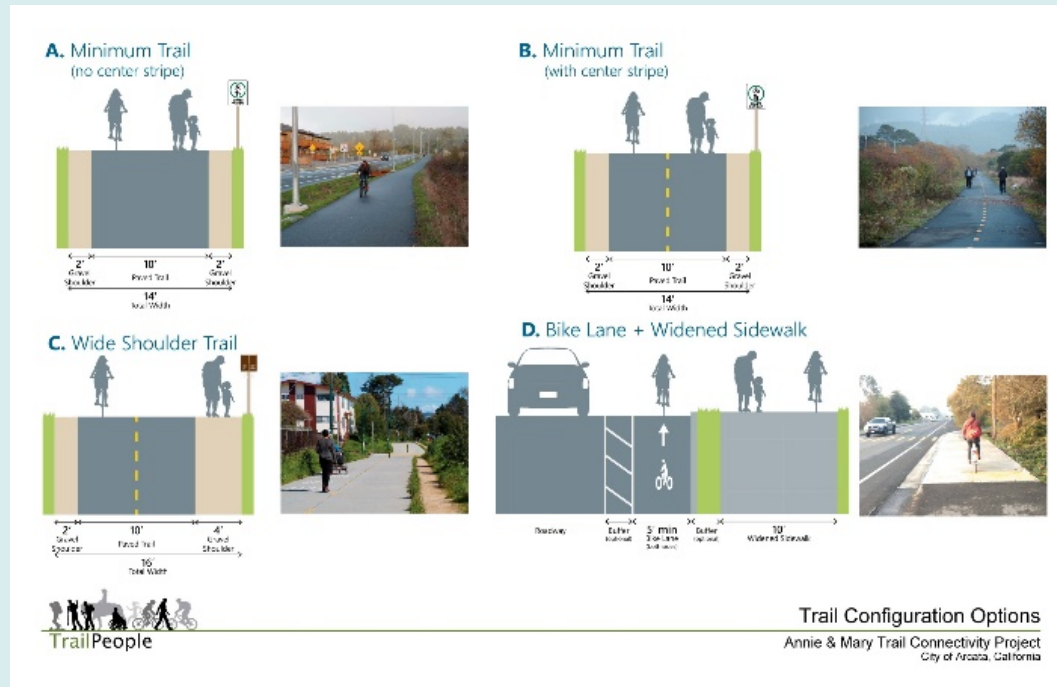
Note: Depending on setback distance, separated intersections may require the bike lane to bend-in toward the vehicle lane to enhance safety.



# Future Roundabout at Sunset and LK Wood



# Trail Configuration Options



# Conceptual Renderings



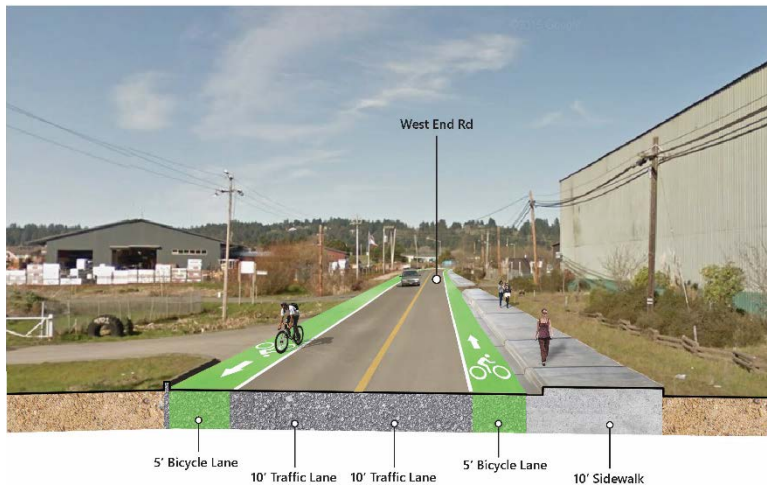
**R4** View South at Highway 101 Undercrossing  
Minimum Trail Width Conceptual Rendering

**Railroad Corridor Alternative**  
Hybrid Alternative on Railroad Corridor



**R5** View South at West End Road near West End Court  
Wide Shoulder Trail Width Conceptual Rendering

**Railroad Corridor Alternative**



**R8** View North along West End Road Sidewalk Alternative  
Bike Lane + Widened Sidewalk Width Conceptual Rendering

**West End Road Alternative**



**R12** View East near HBMWD  
Minimum Trail Width Conceptual Rendering

**Northern Project Extension**

# Input Opportunities

- Review preliminary designs
- Give feedback on open house materials
- Complete comment cards
- Talk with project team staff



# Next Steps

- Project team will refine trail concepts based on feedback tonight and from the pop-up demonstration yesterday
- Sign up at the front table for email updates
- May have another pop-up demonstration on Sunset Avenue after HSU classes end – May or June
- Discuss project at City Council this fall
- Follow project updates at:  
<https://www.cityofarcata.org/831/Annie-Mary-Trail-Connectivity-Project>
- Humboldt Trails Summit May 4th 9:30-12:30 at HSU Kate Buchanan Room

# Arcata Annie & Mary Trail

## TRAILS SUMMIT

CELEBRATING SUCCESSES & LOOKING AHEAD



**Saturday MAY 4, 2019**

9:30 am - 12:30 pm

10:00 am

10:30 am

Open House with trail-supporting organizations

Celebrating local trail successes

Senator Mike McGuire Town Hall  
on the vision for the Great Redwood Trail

Kate Buchanan Room, Humboldt State University

*FREE bike and car parking on HSU campus on Saturdays*



For more information visit:

- [Facebook.com/HumboldtTrailsCouncil](https://www.facebook.com/HumboldtTrailsCouncil)
- [humbolddbaytrail.info](http://humbolddbaytrail.info)





**Arcata Annie & Mary Trail**



Thank you!