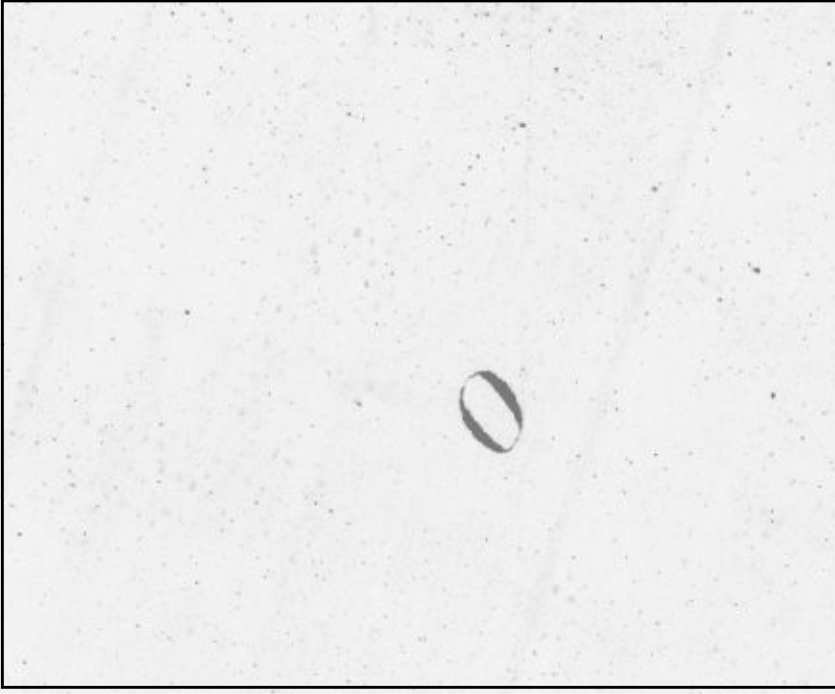
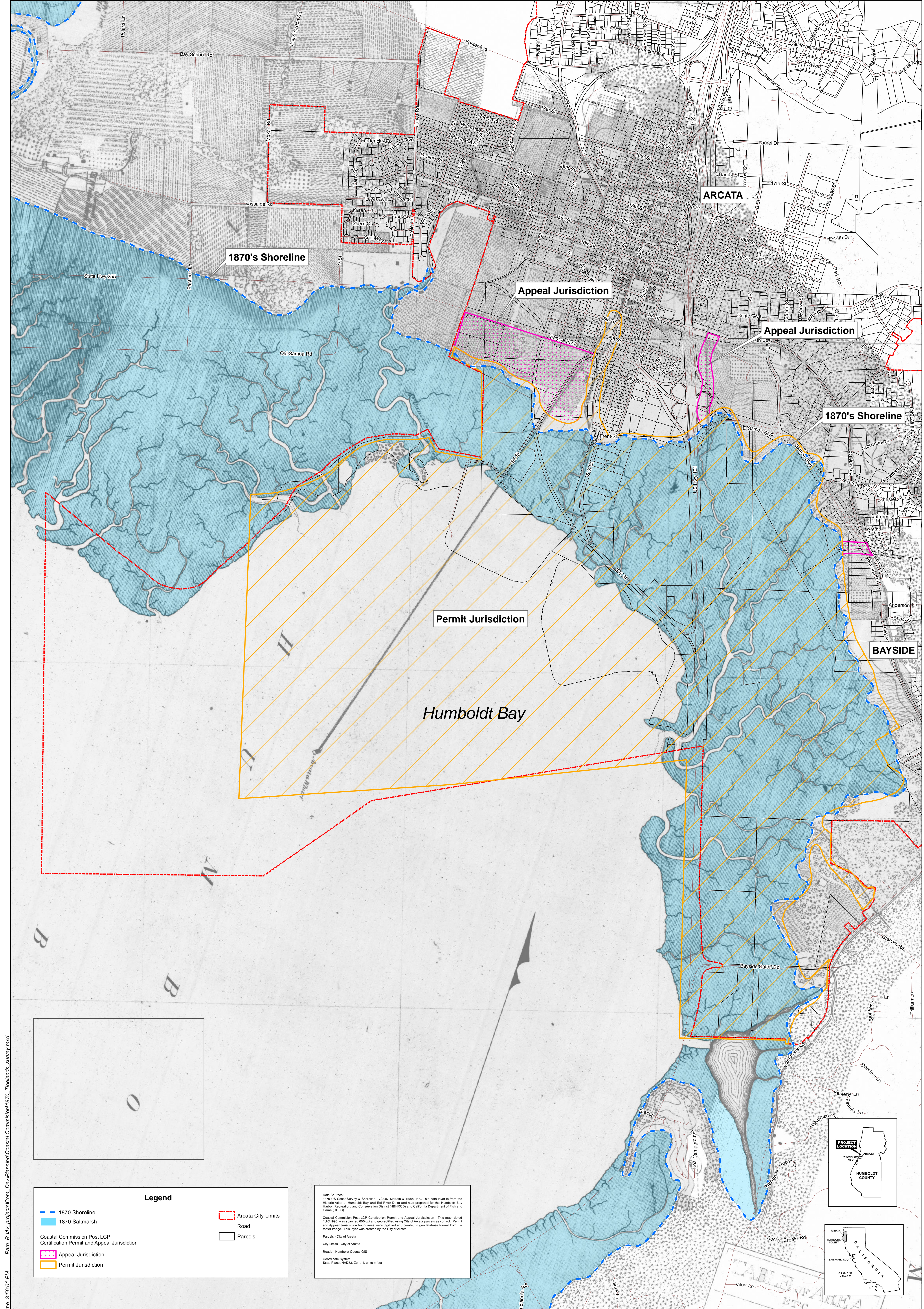


Proj Date: 10/13/2014 Time: 3:56:01 PM Part: F:\wv_projects\Com_Dev\Planning\Coastal Commission\1870_Tidelands_survey.mxd

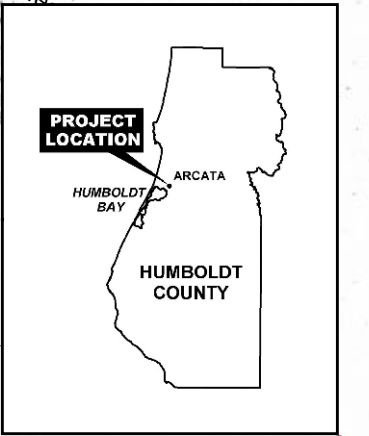


Legend

- 1870 Shoreline
- 1870 Saltmarsh
- Coastal Commission Post LCP Certification Permit and Appeal Jurisdiction
- Appeal Jurisdiction
- Permit Jurisdiction

- Arcata City Limits
- Road
- Parcels

Data Sources:
1870 US Coast Survey & Shoreline - 72007 McBain & Truth, Inc. This data layer is from the Historic Atlas of Humboldt Bay and Est River Delta and was prepared for the Humboldt Bay Harbor, Recreation, and Conservation District (HBRHCD) and California Department of Fish and Game (CDFG).
Coastal Commission Post LCP Certification Permit and Appeal Jurisdiction - This map, dated 11/01/1995, was scanned 600 dpi and georectified using City of Arcata parcels as control. Permit and Appeal Jurisdiction boundaries were digitized and created in geodatabase format from the raster image. This layer was created by the City of Arcata.
Parcels - City of Arcata
City Limits - City of Arcata
Roads - Humboldt County GIS
Coordinate System:
State Plane, NAD83, Zone 1, units = feet



REVISIONS			CITY OF ARCATA Community Development
NO.	ITEM	DATE	
			DRAWN BY:
			CHECKED BY:
			FILE DATE:
			FILE:

Draft

1870 US Coast Survey with City of Arcata Parcels

NORTH

1:8,500

0 500 1,000

Feet

VERIFY SCALES

BAR IS ONE INCH ON ORIGINAL DRAWING

0 1"

IF NOT ONE INCH ON THIS SHEET, ADJUST SCALES ACCORDINGLY

SHEET

1 of 1