

Why Recycle Post-Consumer Carpet?

More than 400 million pounds of carpet are discarded in California landfills every year. AB 2398 is the California Carpet Stewardship law that supports the recycling of carpet into new products and materials. There is now a \$0.05 per square yard stewardship assessment on the purchase of all new carpet.

This assessment supports the carpet recycling industry in California and is paying for this **one-year Rural Counties Carpet Recycling Pilot Project** through **February 28, 2013, Spring 2015**

Recycling carpet saves natural resources, conserves landfill space, reduces the dependency on fossil fuels, and can save money. Recycling allows a product at the end of its useful life to become a new resource.

Carpet can be converted to fiber to make new carpet, carpet padding, erosion control products, and construction material. The carpet fiber can also be converted into plastic pellets and used in automotive components, furniture parts, leach field products, and many more uses.



HAWTHORNE STREET TRANSFER STATION

Location and Hours:

1059 Hawthorne Street
Eureka, CA 95501

Monday - Friday
7:00 AM - 5:00 PM

Saturday
8:00 AM - 4:00 PM

Sunday
9:00 AM - 4:00 PM

Humboldt Waste Management Authority

1059 W Hawthorne Street
Eureka, CA 95501
Phone: (707) 268-8030

To learn more about recycling in Humboldt County
visit <http://hwma.net>



Installing a
new carpet
for a customer?

Remodelling your
own home?

YOU NEED THIS GUIDE

How-to-Guide for
Post-Consumer
Carpet Recycling
in Humboldt County



Published by Carpet America Recovery Effort
(CARE) © 2012

What to do with Post-Consumer Carpet?

This guide gives you the basics for preparing and delivering carpet for recycling.

1 Free of Debris

Make sure the carpet is clean, dry, and free of debris such as tack strips, nails, wood, other flooring materials, and trash. Debris can damage the equipment involved in processing the materials.



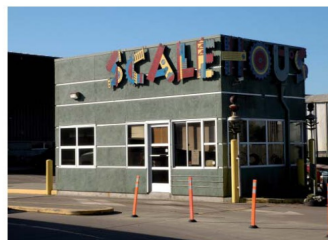
2 Roll it Up

Roll up the carpet. If possible, cut the materials into 6 ft. wide sections, then roll up with the face fiber side or yarn side on the outside.

Carpet only -- NO carpet pads!

3 Get Weighed

Take the rolls to the **Hawthorn Street Transfer Station** (see address on back). First, visit the Scale House to have your vehicle weighed.



4 Drop it Off

You will be directed to the **Carpet Recycling Container**.

This container is provided by CARE as part of the Rural Counties Carpet Recycling Pilot Project.



5 Recycling Fee

Receive a **40% discount** off the regular gate fee as a thank-you for participating in our pilot carpet recycling program.