

- Instructions for when you're out and about:
1. Take the challenge(s) at each destination.
  2. For the photo challenge, send photos to our Facebook, search Arcata Recreation, or tag your photos on Instagram to @arcatarecreation.
  3. Have fun and be respectful to our land, parks, and facilities!
- This guidebook offers destinations to explore, challenges to take and opportunities to adore all the beautiful areas of Arcata – all within our backyard!

## EXPLORE & ADORE ARCATA

mapofplay.kaboom.org

Enter your zip code and watch the map populate with our local parks and playgrounds!



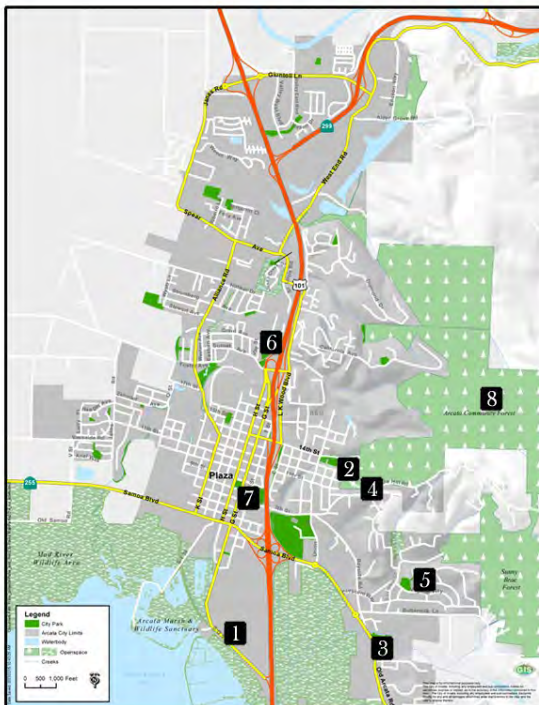
Arcata has many city parks located all over town with various playgrounds, trails, courts, and activities for everyone to enjoy. Choose your favorite park and simply post a photo of you doing your favorite activity there!

There are plenty of places to play, you just need to know your way!

## Pick a Park

## EXPLORE & ADORE

## MAP OF ARCATA



### Places

- 1 Arcata Marsh & Wildlife Sanctuary
- 2 Arcata Community Forest
- 3 Bayside Park Farm & Community Garden
- 4 Redwood Park
- 5 Sunny Brae Park
- 6 Larson Park
- 7 Arcata Plaza
- 8 Volunteer Trail Work
- 9 Pick a Park



### Thanks to Our Sponsors:



## WELCOME TO YOUR NEXT OUTDOOR ADVENTURE!



Brought to you by:  
Arcata Recreation Division  
Creating Community through People, Parks & Programs





**Media Challenge!**  
At the farm, take a photo with any animal. Post it to Facebook or Instagram.



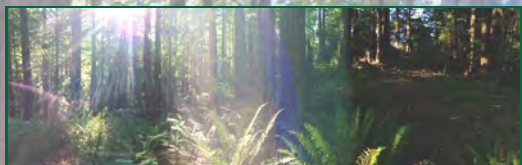

**Challenge!**  
Go to the farm, volunteer at a work day, sign up for a CSA, or simply make a visit. How many goats are at the farm?

Bayside Farm is an educational farm that provides the community the opportunity to learn about and practice organic, sustainable agriculture. The food from this farm is distributed through Community Supported Agriculture (CSAs), the Farmers Market, and local restaurants. For more information, contact the Bayside Farmers at: [baysideparkfarm@cityofarcata.org](mailto:baysideparkfarm@cityofarcata.org)



**EXPLORE & ADORE**  
Bayside Park Farm & Community Garden

## EXPLORE & ADORE Redwood Park



The perfect destination for sun-bathers, hikers, bikers, and birders. Redwood Park provides another access point to the Community Forest. Along trail #1, you will find ancient redwood trees. The bark of these trees provides protection. During a fire, only the inside of redwoods burn. This creates a hollowed-out redwood tree that early settlers kept poultry in, known as a goose pen.

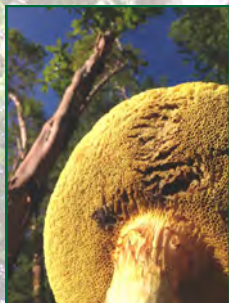


**Media Challenge!**  
Have a friend take a photo of you standing in a goose pen. Post to Facebook or Instagram.

**Challenge!**  
From the main parking lot at the end of 14th street, take trail #1 "Nature Trail Loop" and see how many goose pens you can find. Write your answer below.

## EXPLORE & ADORE Sunny Brae Park

*Nature is good for you!*



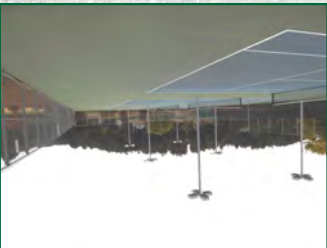
This park is a forested shortcut in the Sunny Brae neighborhoods, providing a beautiful view from the park bench. On a sunny, clear day you can see across Arcata, the bay, and even out to the ocean! But there is also something unique about this park: a fairy ring of redwood trees grows along the path. Fairy rings occur when a group of redwoods are sprouted from a redwood burl or stump, and then grow in a circle, either with the parent tree or around the old stump.

**Challenge!**  
Find the fairy ring, how many redwood trees are in the ring? Write your answer below.

**Media Challenge!**  
Take a photo of your view from the park bench, or the tops of the redwoods in the fairy ring. Post to Facebook or Instagram.



**Challenge!**  
Play a game of bocce ball or tennis with friends, and record your score below.



**Media Challenge!**  
Take a photo of you with your bocce team, or you and your tennis partner and post to Facebook or Instagram.

Check out the three bocce ball courts at Larson Park on the corner of Grant Ave and Eye St. You can rent bocce equipment from the Recreation Office—\$5 per set for 24 hours and \$15 per set for a whole weekend. You can drop in or reserve a court for \$20 for two hours. The tennis courts are available for drop in matches.

## EXPLORE & ADORE Larson Park



## EXPLORE & ADORE Arcata Plaza

### Challenge!

Attend a Saturday Farmers' Market and purchase produce from our local farmers. Local food means supporting the local economy and reducing your carbon footprint, since the food doesn't travel far from the farm! Once you make a purchase, write down the name of the farm you bought it from.

This sculpture is featured in the **Sculpture Scavenger Self Guided Tour**. You can download the tour and explore and adore the rest of the sculptures by visiting:

[www.cityofarcata.org/rec](http://www.cityofarcata.org/rec)

Choose **Self Guided Tours & Quests**

The Arcata Plaza is the heart of Arcata! Surrounded by shops and cafes, the Farmers' Market is also hosted every Saturday between 9am-2pm. The main season for Farmers' Market is April through November, and the winter season is November through March.



### Media Challenge!

Can't make it to a Farmers Market? Take a stroll around the plaza and search for the rain catcher sculpture titled "**Earth Eye**" by **Simon Kang**. It's tricky to find, but if you spot it, take a photo of yourself next to it. Post it to Facebook or Instagram.

## EXPLORE & ADORE Arcata Community Forest

The Arcata Community Forest contains 2,350 acres of land available for many recreational uses such as hiking, biking, horseback riding, and wildlife viewing. Trail maps are available at the Recreation Office and an interactive trails map is available online with biking videos of each trail in the forest, as well as a key to show you where old growth redwoods are! You can access the interactive map here:

[www.cityofarcata.org/rec](http://www.cityofarcata.org/rec)

Choose **Self Guided Tours & Quests**

### Double Media Challenge!

Post a photo of you and your bike on any trail in the community forest, or find an "octopus tree" growing on top of an old redwood stump, and take a photo next to it!



## EXPLORE & ADORE Arcata Marsh & Wildlife Sanctuary

A year-round destination for nature viewing. Great Blue Herons, Great Egrets and Snowy Egrets are just a few of the birds that can be spotted year round; along with insects, mammals, amphibians, and various plants. The Marsh also functions as Arcata's innovative water treatment facility.



California Newt

### Challenge!

Outside the Marsh Interpretive Center on South G Street, there's a sign called "Where's My Home?" Which marsh inhabitant builds dummy nests to fool predators? Write your answer below.

### Media Challenge!

Take a photo with the "What's your Wingspan?" sign at the Interpretive Center, or take a photo of your favorite wildlife sighting. Post to Facebook or Instagram.

## EXPLORE & ADORE Volunteer Trail Work Days

Volunteering with the city is the perfect opportunity to help clean and restore our forests, marshes, and parks. A variety of volunteer projects are available and occur about twice a month. Some projects include brushing back trails, removing invasive plant species, cleaning up litter, and improving signage. Volunteer work lowers trail maintenance costs and helps keep our shared areas clean and safe.

View and print the volunteer workday schedule:

[www.cityofarcata.org](http://www.cityofarcata.org)

Choose **Volunteer Work Days**

### Challenge!

Attend a volunteer work day, which area of Arcata did you help? Write your answer below.

