



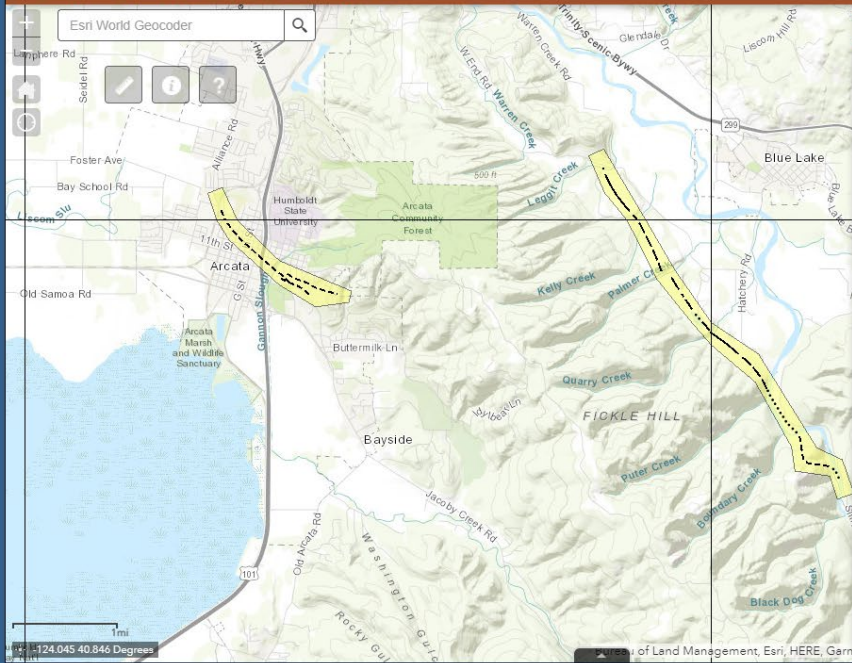
[View Map Full Screen](#)

California Department of Conservation

California Geological Survey

Earthquake Zones of Required Investigation

CGS Homepage



Legend

Colors may vary due to transparency and overlapping data.

Fault Traces

- Accurately Located
- - - Approximately Located
- · - · - Approximately Located, Queried
- · - · - Inferred
- · - · - Inferred, Queried
- · - · - Concealed
- · - · - Concealed, Queried
- · - · - Aerial Photo Lineament

Fault Zone

- Yellow shaded area

Liquefaction Zone

- Green shaded area

Landslide Zone

- Light blue shaded area

Liquefaction Landslide Overlap Zone

- Orange shaded area

Area Not Evaluated for Liquefaction or Landslides

- White shaded area

Parcels

- Red shaded area: Parcel is in an Earthquake Fault Zone, a Liquefaction Zone, and a Landslide Zone
- Green shaded area: Parcel is in an Earthquake Fault Zone and a Liquefaction Zone
- Light blue shaded area: Parcel is in an Earthquake Fault Zone and a Landslide Zone
- Yellow shaded area: Parcel is in an Earthquake Fault Zone