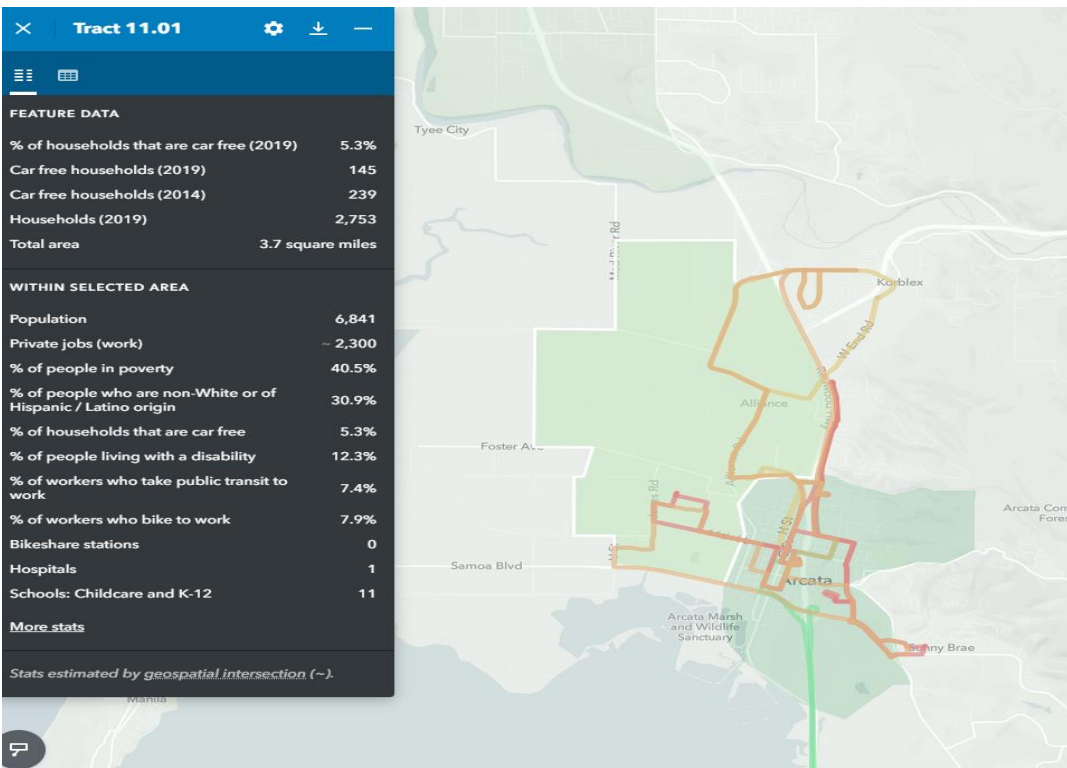
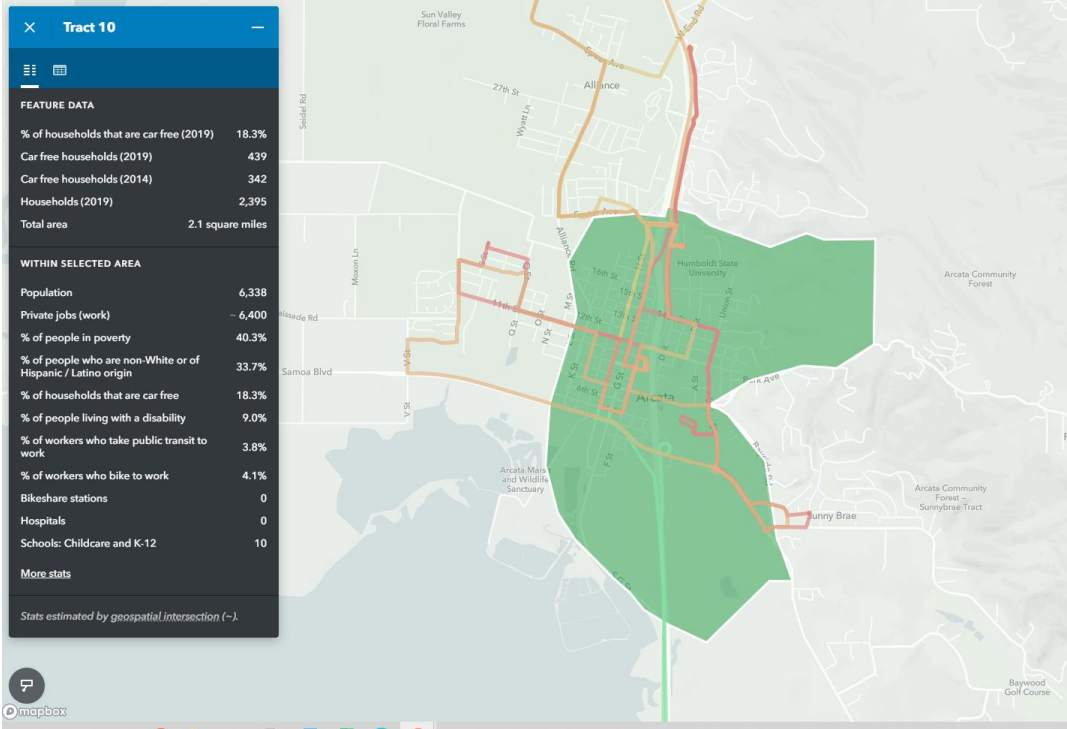
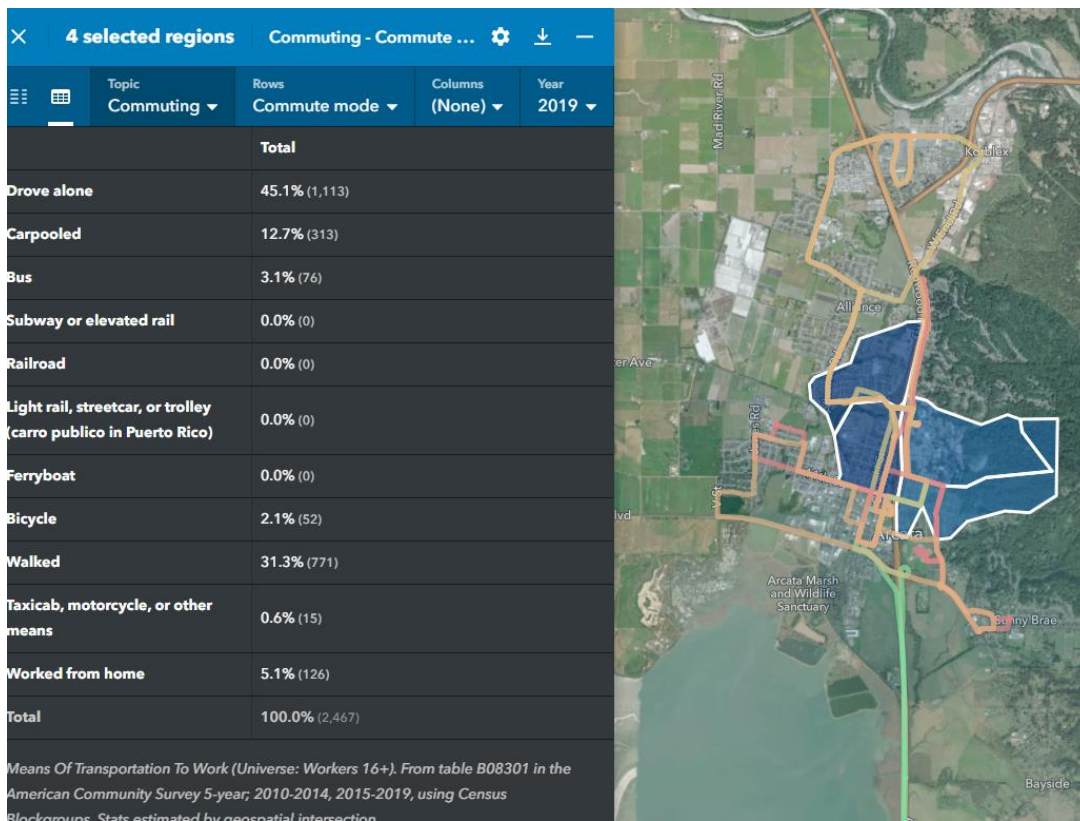
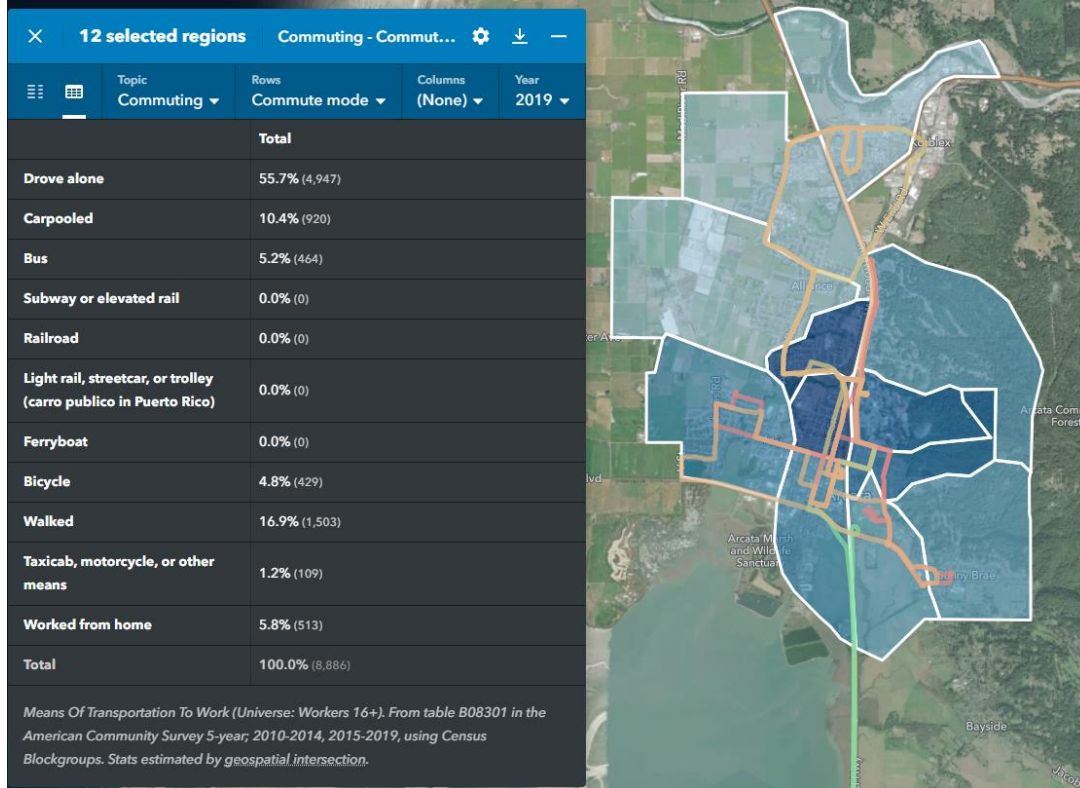


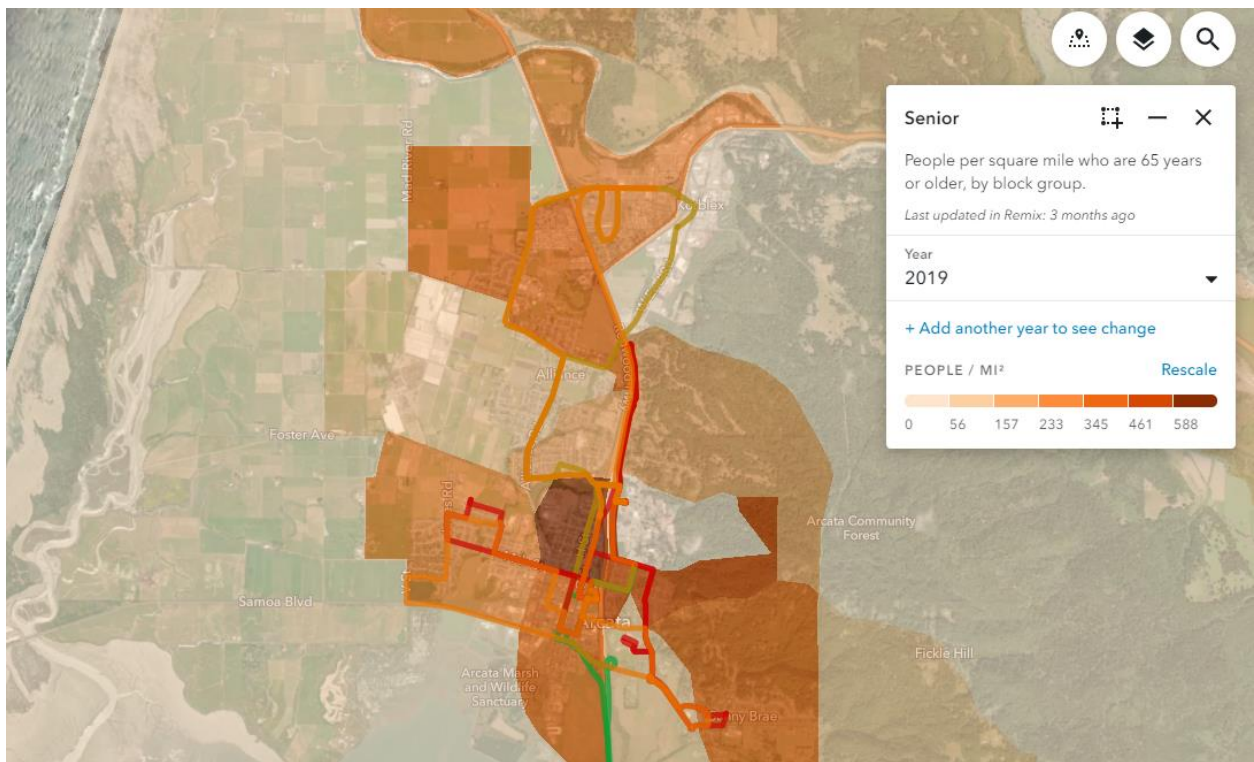
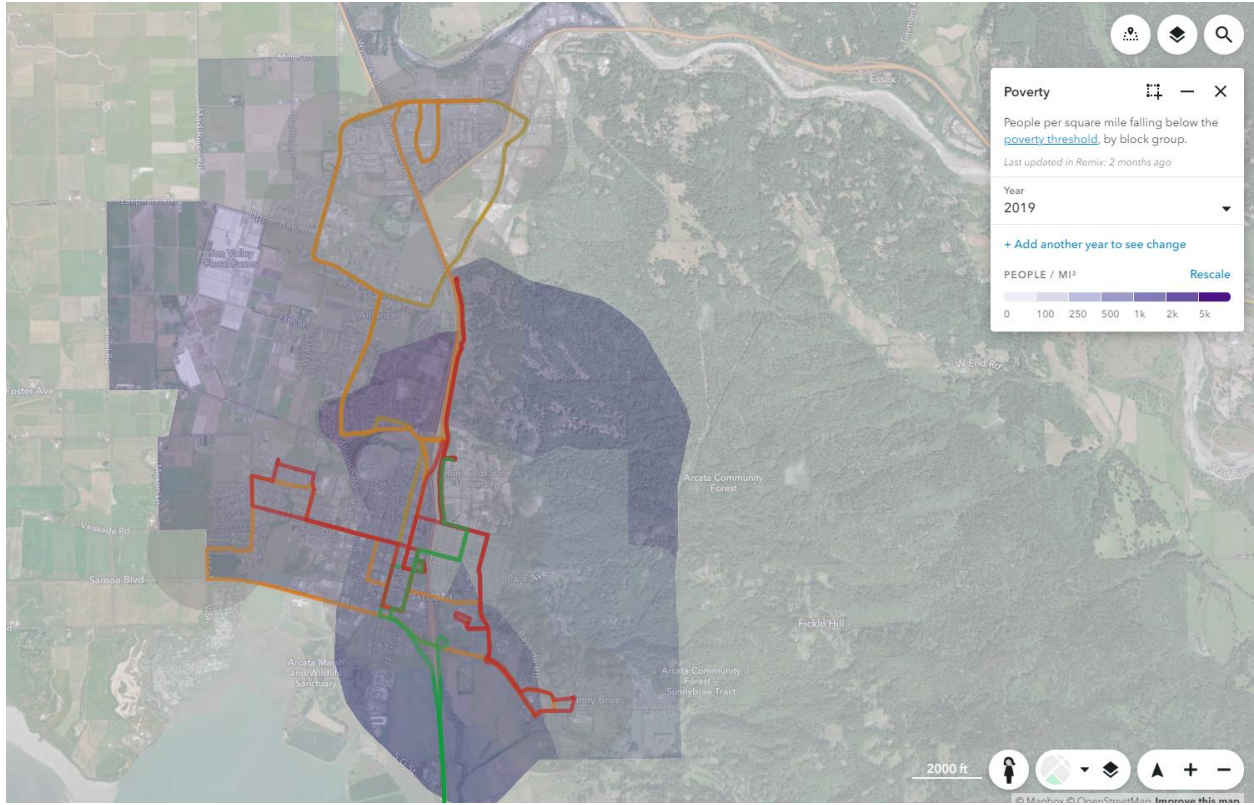
Carless households



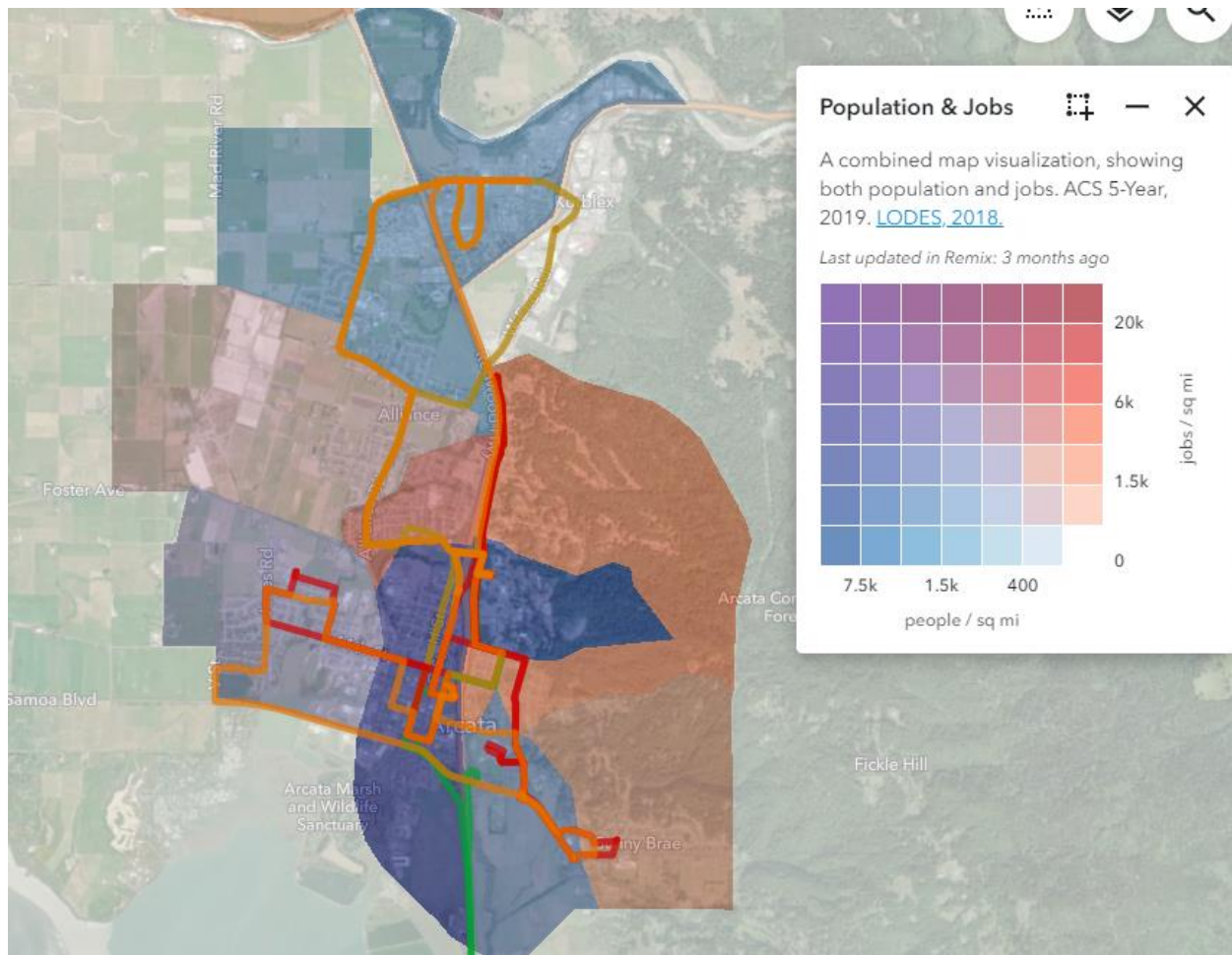
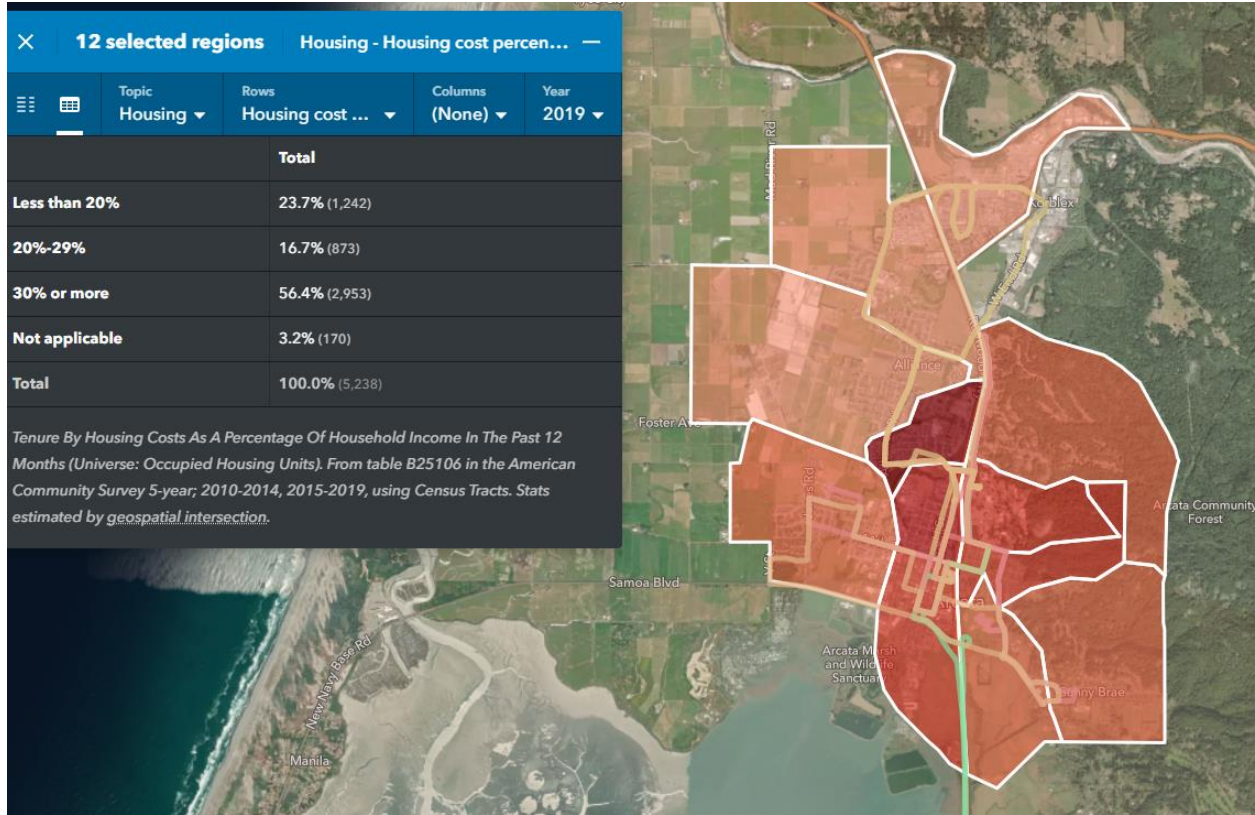
Work at home



Poverty & Senior



Housing Cost as percent of income



Commute length

12 selected regions		Commuting - Commute mode by Commute length							
Topic	Rows	Columns					Year		
Commuting	Commute mode	Commute len...					2019		
		Less than 10 minutes	10 to 14 minutes	15 to 19 minutes	20 to 29 minutes	30 to 44 minutes	45 to 59 minutes	60+ minutes	Total
Drove alone		18.8% (1,576)	8.4% (706)	13.2% (1,106)	12.8% (1,070)	3.9% (323)	1.5% (123)	0.5% (40)	59.1% (4,944)
Carpooled		1.1% (89)	2.3% (189)	1.7% (142)	4.6% (382)	0.0% (0)	0.8% (65)	0.6% (53)	11.0% (920)
Bus		0.0% (0)	0.5% (42)	0.6% (50)	0.6% (48)	1.9% (157)	0.6% (50)	1.4% (117)	5.5% (464)
Light rail, streetcar, or trolley (carro publico in Puerto Rico), subway or elevated rail		0.0% (0)	0.0% (0)	0.0% (0)	0.0% (0)	0.0% (0)	0.0% (0)	0.0% (0)	0.0% (0)
Long-distance train or commuter rail or Ferryboat		0.0% (0)	0.0% (0)	0.0% (0)	0.0% (0)	0.0% (0)	0.0% (0)	0.0% (0)	0.0% (0)
Walked		5.5% (460)	3.9% (324)	3.4% (281)	3.4% (281)	0.9% (73)	0.6% (47)	0.4% (37)	18.0% (1,503)
Taxicab, motorcycle, bicycle, or other means		0.5% (46)	3.0% (253)	2.5% (213)	0.3% (26)	0.0% (0)	0.0% (0)	0.0% (0)	6.4% (538)
Total		25.9% (2,171)	18.1% (1,514)	21.4% (1,792)	21.6% (1,807)	6.6% (553)	3.4% (285)	3.0% (247)	100.0% (8,379)

Means Of Transportation To Work By Travel Time To Work (Universe: Workers 16+ not working from home). From table B08134 in the American Community Survey 5-year, 2010-2014, 2015-2019, using Census Blockgroups. Stats estimated by geospatial intersection.